

# A02ES-I series

## Emergency stop switches

*Distinctive features and specifications*



- ☐ Approved to EN 60947-5-5 and UL 508
- ☐ Industrial range
- ☐ Pull or twist to release
- ☐ AC-12, 6A 240VAC / DC-12, 8A 24VAC
- ☐ Panel sealed to IP65
- ☐ Illuminated model

A02ESI1612A-R1

### ELECTRICAL SPECIFICATIONS

- Electrical function : push to shutt off, pull or twist to release
- Current/voltage rating : AC-12, 10A 24VAC / 6A 240VAC  
DC-12, 8A 24VDC  
AC-15, 10A 24VAC / 3A 240VAC  
DC-13, 4A 24VDC
- Electrical life : 100.000 cycles with one contact block
- Insulation resistance : 50 MΩ min.
- Dielectric strength : contact block 2.500 Vrms
- Contacts : silver

### ENVIRONMENTAL SPECIFICATIONS

- Front panel sealing : IP65

### GENERAL SPECIFICATIONS

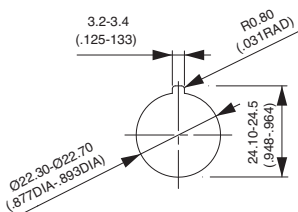
- Panel thickness : 6 mm (.236) max.
- Low level or mechanical life : 250.000 cycles w. one contact block
- Operating temperature : -20°C to +55°C
- Switch terminals : M3.5 screws

### AGENCY APPROVALS

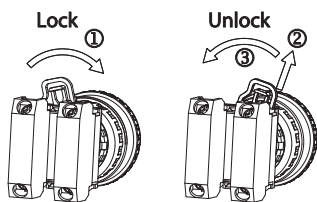


EN 60947-5-5

### PANEL CUT-OUT



### MOUNTING LOCKING SYSTEM



Single pole  
Normally closed



Double pole  
Normally closed



**Mounting accessories** : Standard hardware supplied : 1 nut and 1 flat panel seal



**Packaging unit** : box of 5 pieces

The company reserves the right to change specifications without notice - Not for sale in JAPAN.

# A02ES-I series

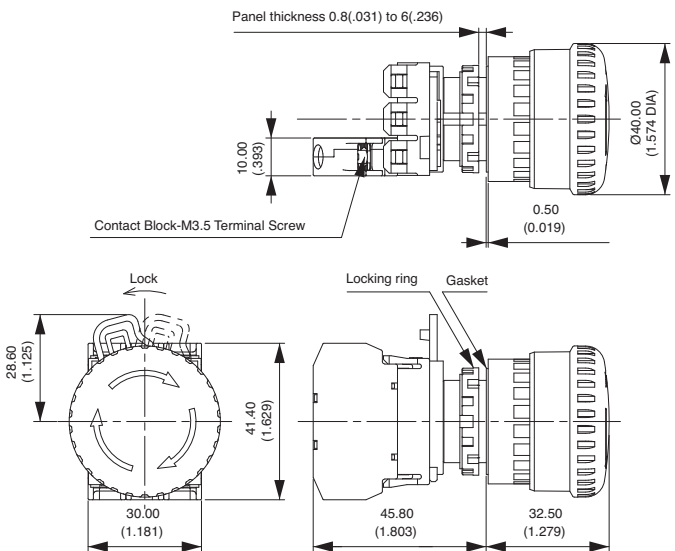
## Emergency stop switches

Panel cut-out Ø 22 (.866)

### Single pole - Normally closed



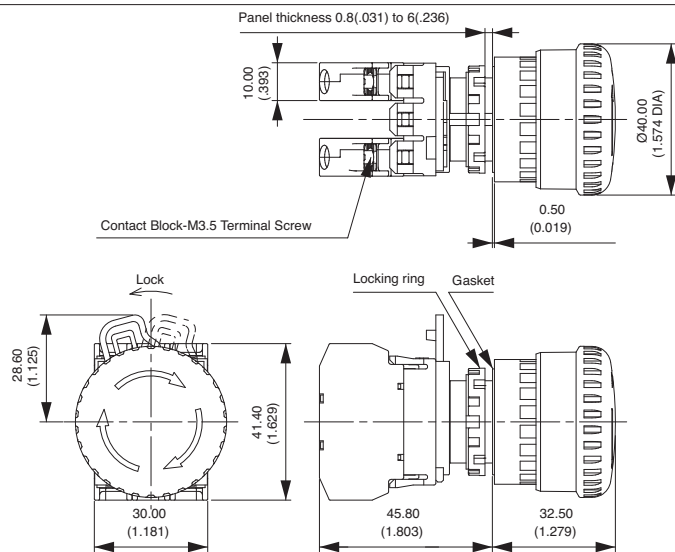
A02ESI3B101IX0



### Double pole - Normally closed



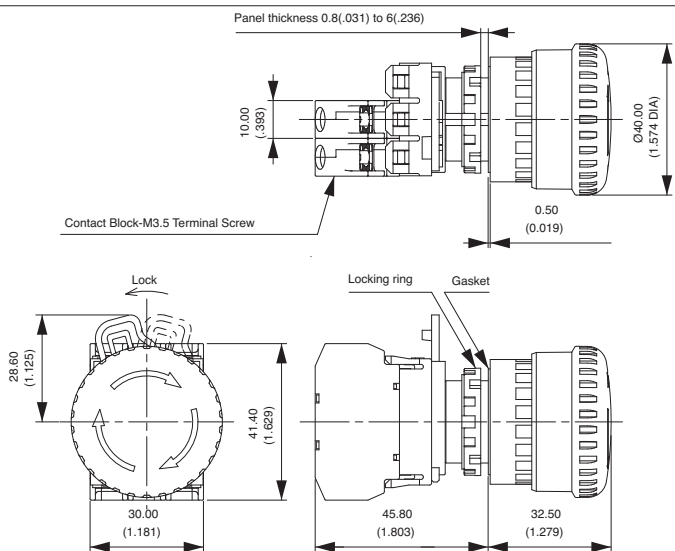
A02ESI3B102IX0



### Single pole - Normally closed - illuminated



With LED 24V  
A02ESI4B101IR2

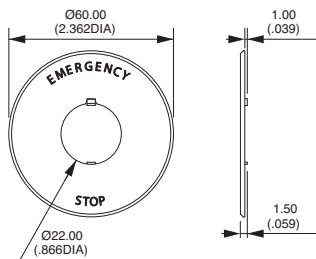


# A02ES-I series

Emergency stop switches

Accessories

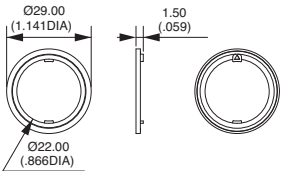
## Ø 60 mm name plate



Legend "EMERGENCY STOP" is indicated outside a Ø 44 mm circle.

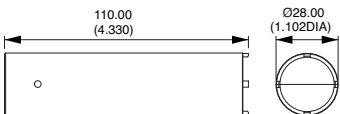
A02-U27Y

## Anti-rotation ring



A02-U9ZRL

## Locking ring wrench



A02-9ZT1