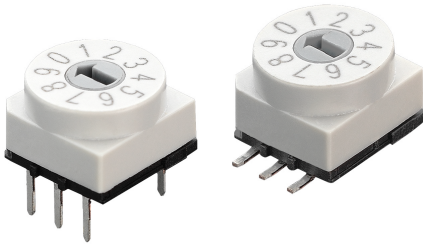


P65 series

Rotary code switches

Through-hole or surface mount



- ☐ Designed for higher temperature applications
- ☐ Solid PCB pins
- ☐ Highly reliable
- ☐ Abrasion resistant gold-plated contacts

SERIES	Mounting	Actuators	Codes	Optional Terminals	Packaging
P65	THR Through-hole SMT Gull wing surface mount	1 Arrow-shaped slot 7 Cross-shaped slot (accessories)	01 BCD 02 BCD complement 03 Hexadecimal 06 Hexadecimal complement * Other codes available upon request	V* Crimped L254* Right angle *THR versions only	(blank) Tube TR Tape & Reel

ELECTRICAL SPECIFICATIONS

- Operating voltage: 42 VDC max.
- Contact load, static: 200mA max.
- Contact load, dynamic: 100mA max.
- Initial contact resistance: 80 mΩ max.
- Insulation resistance: 100 MΩ min.

MECHANICAL AND THERMAL SPECS

- Torque (typical): 1.3 Ncm
- Expected life : 30,000 cycles min.
- Operating temperature:
-60°C to +125°C (-76°F to +257°F)
- Positions: 4, 6, 10, 16

MATERIALS

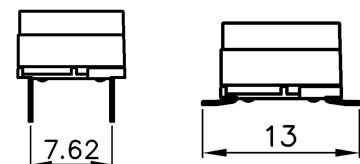
- Base: UL94-V0, high temperature thermoplastic, black
- Cover: UL94-V0, high temperature thermoplastic
- Actuator: PA46 nylon
- Spring: Stainless steel
- Contacts: Gold over nickel-plated copper alloy
- Terminals: Tin plated

SOLDER RECOMMENDATIONS

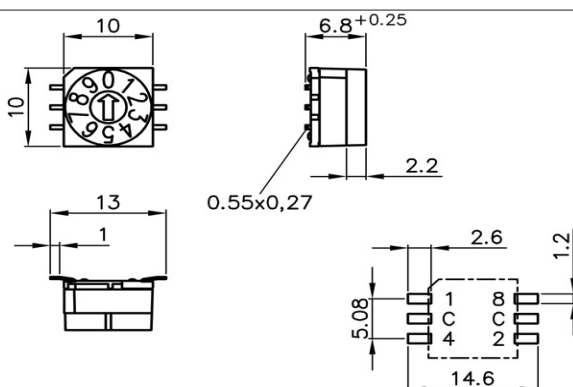
- Reflow soldering: 260°C max. for 10 seconds max.
- Wave soldering: 280°C max. for 5 seconds max.
- Hand soldering: 340°C max. for 2 seconds max.

PACKAGING

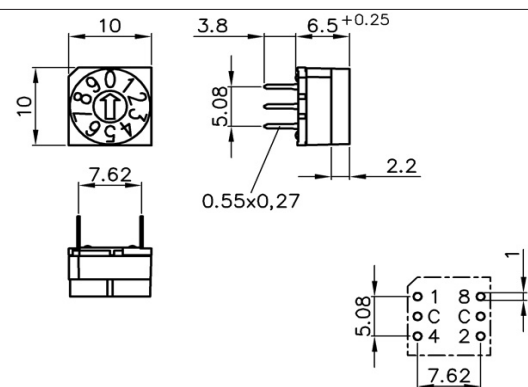
- Switches: Tubes of 50 pieces or reels of 300 pieces
- Accessories : bags of 50 pieces



DIMENSIONS (SURFACE MOUNT)



DIMENSIONS (THROUGH-HOLE)



Dimensions are in mm/(inches).

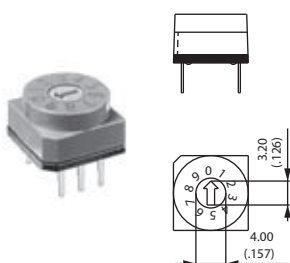
www.apem.com

APEM

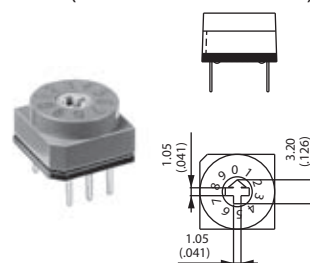
Through-hole or surface mount

ACTUATORS

1 Screwdriver



7 Cross
(accessories - see below)



CODES

01 BCD

	C	1	2	4	8	
0	•					0
1	•	•				1
2	•		•			2
3	•	•	•			3
4	•			•		4
5	•	•		•		5
6	•		•	•		6
7	•	•	•	•		7
8	•				•	8
9	•	•			•	9

Position Marking

02 BCD complement

	C	1	2	4	8	
0	•	•	•	•	•	0
1	•		•	•	•	1
2	•	•		•	•	2
3	•			•	•	3
4	•	•	•		•	4
5	•		•		•	5
6	•	•			•	6
7	•				•	7
8	•	•	•	•		8
9	•		•	•		9

03 Hexadecimal

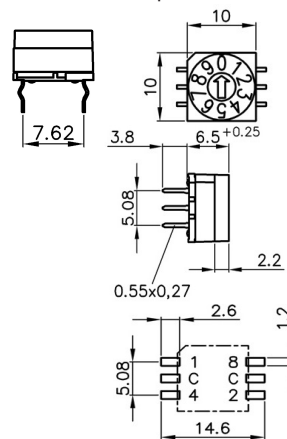
	C	1	2	4	8	
0	•					0
1	•	•				1
2	•		•			2
3	•	•	•			3
4	•			•		4
5	•	•		•		5
6	•		•	•		6
7	•	•	•	•		7
8	•				•	8
9	•	•			•	9
10	•		•		•	A
11	•	•	•		•	B
12	•			•	•	C
13	•	•		•	•	D
14	•	•	•	•	•	E
15	•	•	•	•	•	F

06 Hexadecimal complement

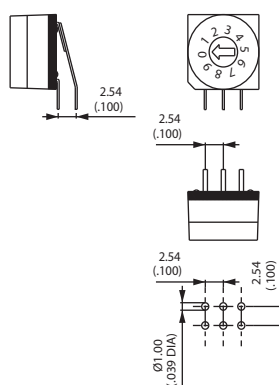
	complement					
	C	1	2	4	8	
0	•	•	•	•	•	0
1	•		•	•	•	1
2	•	•		•	•	2
3	•			•	•	3
4	•	•	•		•	4
5	•		•		•	5
6	•	•			•	6
7	•				•	7
8	•	•	•	•		8
9	•		•	•		9
10	•	•		•		A
11	•			•		B
12	•	•	•			C
13	•		•			D
14	•	•				E
15	•					F

OPTIONAL TERMINALS

V	Crimped (THR)
---	---------------

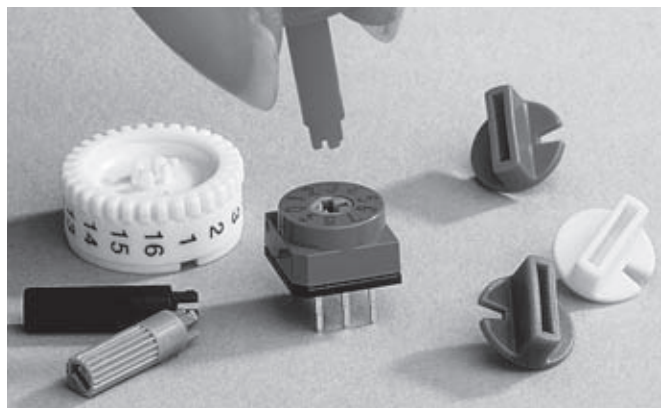


L254	Right angle (THR)
------	-------------------



P65 / PT65 series

Accessories



ACCESSORIES ADAPTED TO YOUR APPLICATIONS

Basic model P65 has been designed to accept different actuators with snap-in connection.

Depending on your application, you can choose between spindles or plastic knobs in two different lengths and a Ø 17mm (.669) knurled wheel for lateral marking.

Standard colors are shown below. Special colors are also available on request.

SPINDLES Length 11.6 mm (standard) Length 13.3 mm	P/N U4822 U4824 U4832	COLORS black grey black	
PLASTIC KNOBS Length 5.3 mm (standard) Length 15.7 mm Length 4.4 mm	P/N U4906 U4916 U4941 U4943 U4944 U4945 U4946	COLORS red red blue green grey yellow red	
KNURLED WHEEL (unmarked - marking on request)	P/N U4847/1	COLOR white/black	

STANDARD PRODUCTS

MODELS CODES	FOR SCREWDRIVER		WITH SPINDLE	WITH SEGMENT WHEEL		FOR ACCESS.
	Upper actuation	Side actuation	Upper actuation	Upper actuation	Side actuation	Upper actuation
BCD	PT65101	PT65101L254 PT65101L508	PT65301	PT65501	- -	PT65701 -
BCD complement	PT65102	-	-	PT65502	-	-
Hexadecimal	PT65103	PT65103L254 PT65103L508	PT65303	PT65503	PT65303L254	-
Hexadecimal complem.	PT65106	-	-	-	-	-