

IT 40 series

Mains pushbutton switches - 6000V dielectric strength

Distinctive features and specifications

UG1006-A



☐ Mains pushbutton switches for PC boards

☐ Highest dielectric 6 KV

☐ Latchdown mechanism

ELECTRICAL SPECIFICATIONS

- Max. current/voltage rating with resistive load : see table below
- Insulation resistance : 10.000 M Ω min. at 500VDC
- Dielectric strength : 6.000 Vrms 50 Hz min.
(other components to be kept outside protection area A to preserve 6KV on PCB - see drawing on next page)
- Electrical life at full load : 20.000 cycles

CURRENT/VOLTAGE RATINGS

Certified ratings	Inrush current
IEC 65 NFC 92130 (L.C.I.E. certificate)	according to UL1054
1,5/56A 250VAC 20.000 cycles	TV3 250VAC 25.000 cycles

MATERIALS

- Case and cover : polyester
UL VO
- Plunger : polyamide 6-6
- Contacts : silver/nickel alloy
(Ag/Ni)
- Other molded parts in
UL approved materials

GENERAL SPECIFICATIONS

- Mechanical life : 50.000 cycles min.
- Operating temperature : -10°C to +85°C
- Storage temperature : -30°C to +85°C
- Total travel : 8 mm (.314)

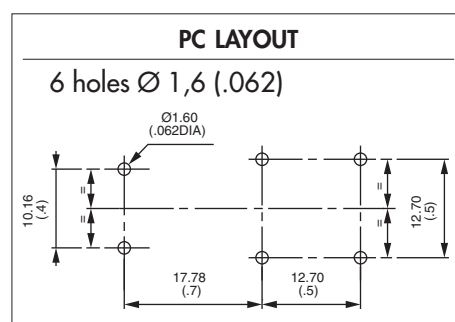
Dimensions : first dimensions are in mm while inches are shown as bracketted numbers.



Packaging unit : 40 pieces

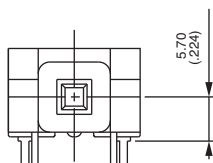
Mains pushbutton switches - 6000V dielectric strength

10/10/2016

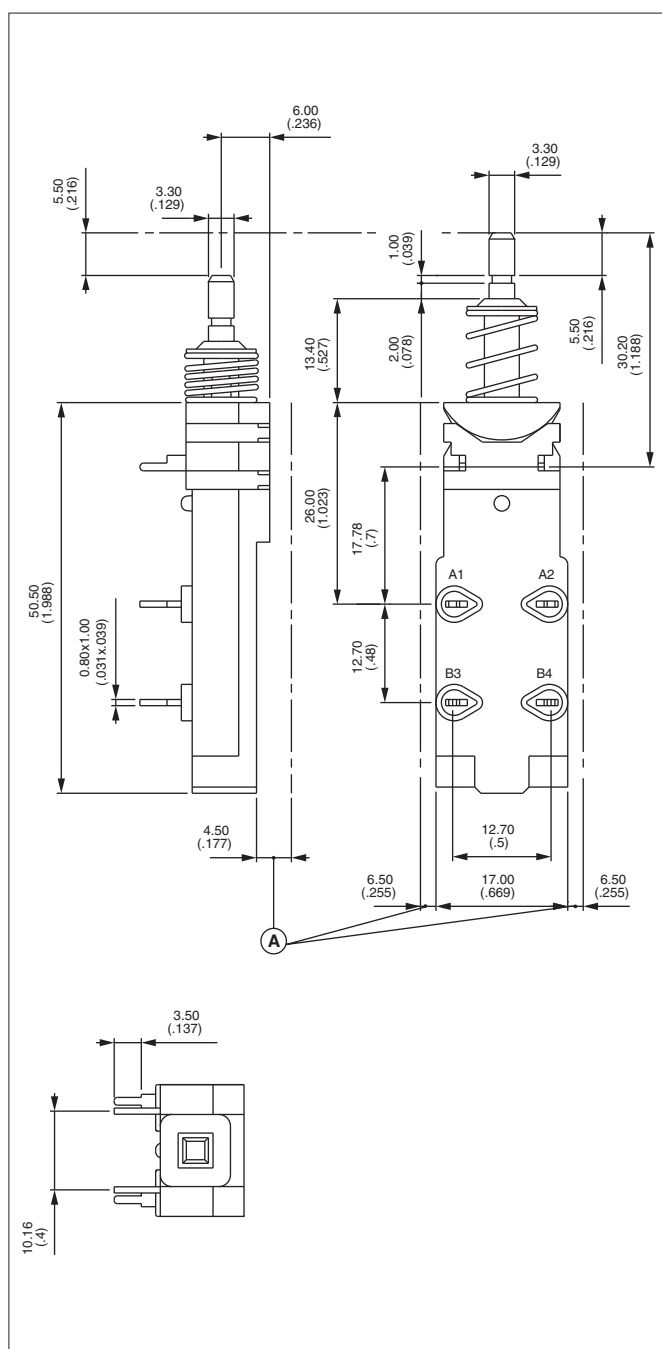
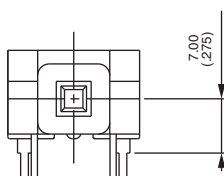


A diagram showing a box labeled 'A' connected to a box labeled 'B'.

ON - OFF



ON - OFF

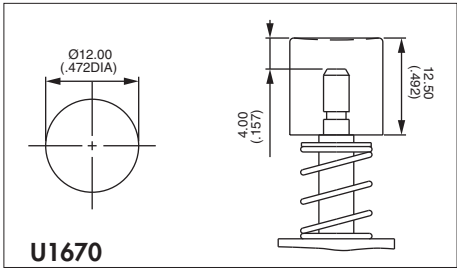




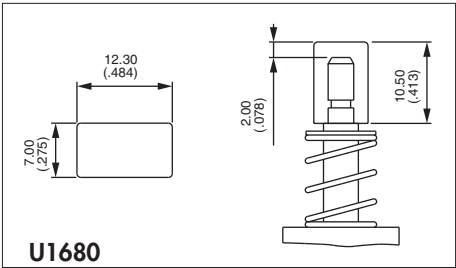
IT 40 series

Mains pushbutton switches - 6000V dielectric strength

CAPS



U1670
Round cap



U1680
Rectangular cap

Cap colours	
Replace "0" by number	
1	blue
1/4	dark blue
2	black
3	green
4	grey
5	yellow
6	red
7/1	white
9	orange