

PHAP40 series

Momentary or latching action key switches

Distinctive features and specifications

UG1410A



☐ The smallest latching action switch of the range

☐ Audible "click"

☐ Models with 6 x 6 mm case on request

ELECTRICAL SPECIFICATIONS

- Max. current/voltage rating with resistive load : 100mA 30VDC
- Initial contact resistance : 100 mΩ max.
- Insulation resistance : 100 MΩ min. at 500VDC
- Dielectric strength : 500 Vrms min. (1 min.)
- Electrical life : 10.000 cycles

MATERIALS

- Case : polyamide
- Actuator : polyamide
- Contacts : brass, silver plated

GENERAL SPECIFICATIONS

- Travel : see next page.
- Wave soldering : 255°C, 5 seconds
- Manual soldering : 300°C ± 10°C, 3 seconds
- Operating force :
 - Model PHAP4673 : 1,4N ± 0,5N
 - Models PHAP4683 and PHAP4383V : 2N ± 0,5N
- Operating temperature : -20°C to +70°C

Dimensions : first dimensions are in mm while inches are shown as bracketted numbers.



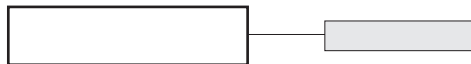
Packaging unit : 1.000 pieces.

The company reserves the right to change specifications without notice.

Straight PC terminals

- Double pole, double throw
- Non-shorting contacts
- Moulded-in terminals

MODEL STRUCTURE

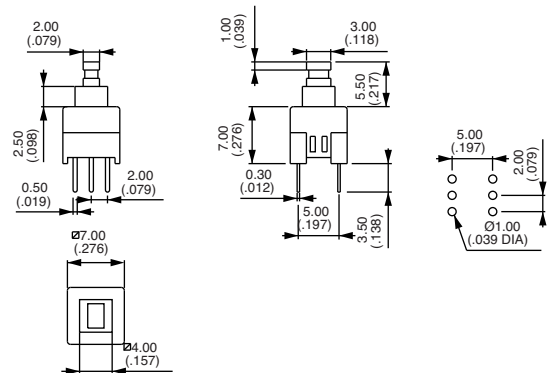


7 x 7 mm case



PHAP4673

ON - ON





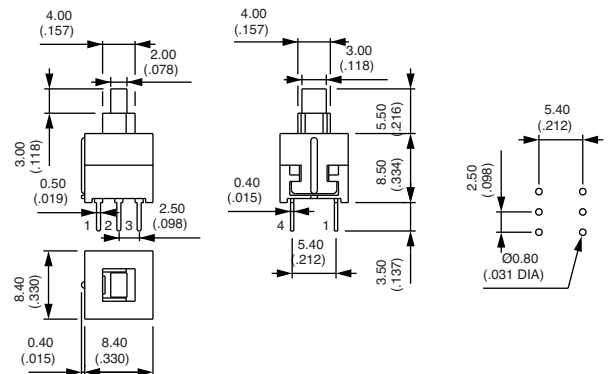
Pre-travel : 1 mm - Total travel : 1,8 mm

8,4 x 8,4 mm case



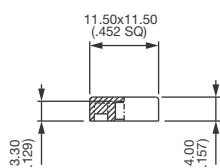
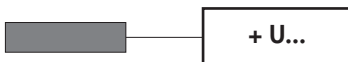
PHAP4683
PHAP4383V *

| | |
|---|---|
|  |  |
| 1-2 | 2-3 |
| 4-5 | 5-6 |
| ON | - ON |
| ON | - MOM |

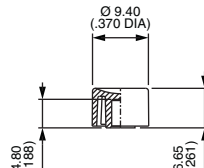


Total travel : 2,5 mm * Audible click

CAPS



U4520 (square)



U4530

Cap colours

Remplace "0"
by number :

- | | |
|-----|--------|
| 1 | blue |
| 2 | black |
| 3 | green |
| 4 | grey |
| 5 | yellow |
| 6 | red |
| 7 | ivory |
| 7/1 | white |
| 9 | orange |