

# 21000N series

## Low profile toggle switches

*Distinctive features and specifications*



UG1006-A

- ☐ Available with threaded or plain bushing, both with mounting plate
- ☐ Low profile - same height for single and double pole
- ☐ Wave solderable only

### ELECTRICAL SPECIFICATIONS

- Max. current/voltage rating with resistive load :
  - silver contacts (A) : 2A 250VAC - 4A 125VAC - 4A 30VDC
  - gold plated brass contacts (LD) : 100mA 30VDC
- Minimum load :
  - silver contacts (A) : 100mA 10V
  - gold plated brass contacts (LD) : 10 $\mu$ A 5VDC - 10mA 50mV
- Initial contact resistance : 20 m $\Omega$  max.
- Insulation resistance : 1.000 M $\Omega$  min. at 500VDC
- Dielectric strength :
  - 1.000 Vrms 50 Hz min. between terminals
  - 2.000 Vrms 50 Hz min. between poles
  - 2.000 Vrms 50 Hz min. between terminals and frame
- Electrical life at full load :
  - silver contacts (A) : 20.000 cycles
  - gold plated brass contacts (LD) : 50.000 cycles
- Low level or mechanical life : 100.000 cycles

### MATERIALS

- Case and cover : PBT
- Actuator : brass, nickel plated
- Bushing : brass, nickel plated
- Contacts
  - A : silver
  - LD : brass, gold plated

### GENERAL SPECIFICATIONS

- Operating temperature : -40°C to +85°C

# 21000N series

## Low profile toggle switches

### Overview



21

#### SERIES

#### Terminals and bushings

- 1 Straight PC terminals, threaded bushing
- 2 Straight PC terminals, plain bushing

#### Number of poles

- 3 Single pole
- 4 Double pole

#### Electrical functions

6	ON	-	ON
9	ON	OFF	ON
7	MOM	OFF	MOM
8	ON	OFF	MOM
2	ON	-	MOM

N

#### Version

**N**  
For all models.

#### OPTIONS

#### Contact materials

- A** Silver  
**LD** Brass, gold plated

#### Finish

- Blank** Bright chrome finish  
**G** Matt black finish on bushing, actuator and hardware.

#### Sealing

- Blank** Epoxy sealed terminals standard  
**K** Sealing by O-ring

### ABOUT THIS SERIES

On the following pages, you will find successively :

- model structure of switches
- options in the same order as in above chart

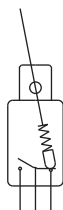
**Dimensions** : first dimensions are in mm while inches are shown as bracketed numbers.



**Mounting accessories** : standard hardware supplied with all models with threaded bushing : 2 hex nuts 8 mm (.314) across flats. Standard and special hardware available are presented in section I.

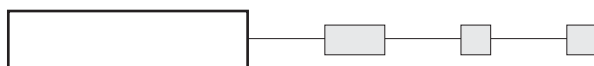


**Packaging unit** : 50 pieces for SP models, 25 pieces for DP.



- Epoxy sealed terminals standard
- 1 and 2 pole configurations

## MODEL STRUCTURE

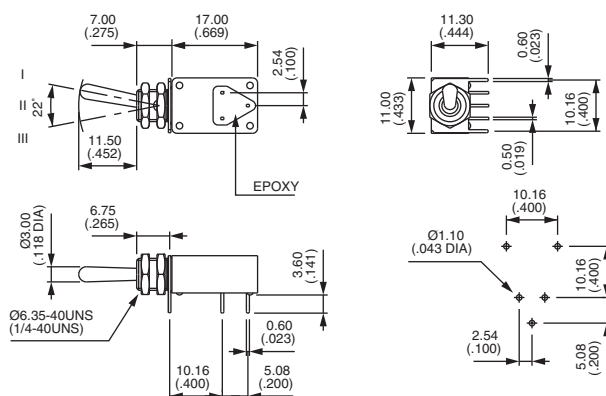


### Threaded bushing - single pole



21136N  
21139N  
21137N  
21138N  
21132N

III	II	I
2-3		1-2
ON	-	ON
ON	OFF	ON
MOM	OFF	MOM
ON	OFF	MOM
ON	-	MOM

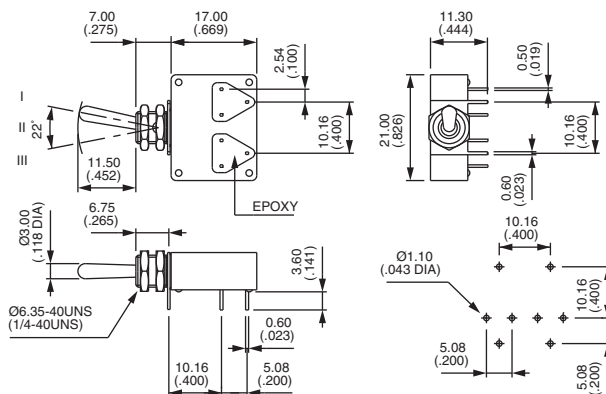


### Threaded bushing - double pole



21146N  
21149N  
21147N  
21148N  
21142N

III	II	I
2-3		1-2
5-6		4-5
ON	-	ON
ON	OFF	ON
MOM	OFF	MOM
ON	OFF	MOM
ON	-	MOM

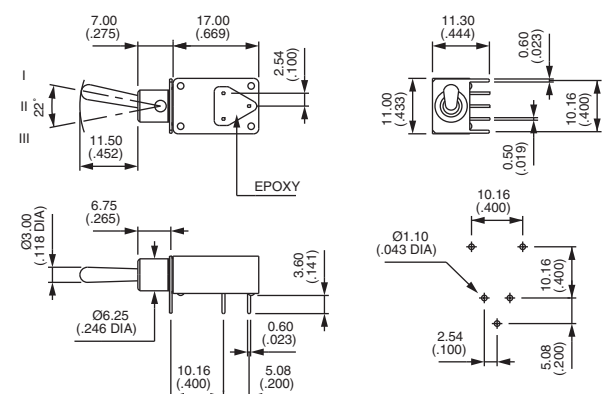


### Plain bushing - single pole



21236N  
21239N  
21237N  
21238N  
21232N

III	II	I
2-3		1-2
ON	-	ON
ON	OFF	ON
MOM	OFF	MOM
ON	OFF	MOM
ON	-	MOM

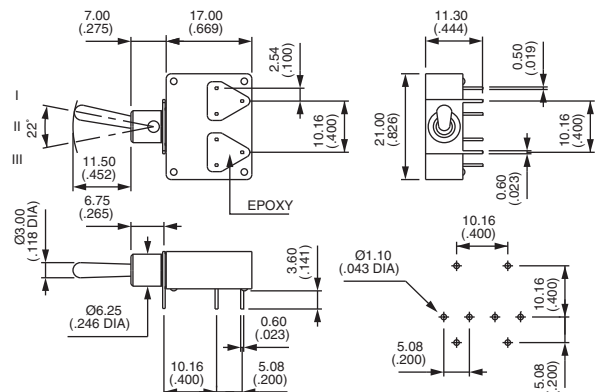


## Low profile toggle switches

21246N  
21249N  
21247N  
21248N  
21242N



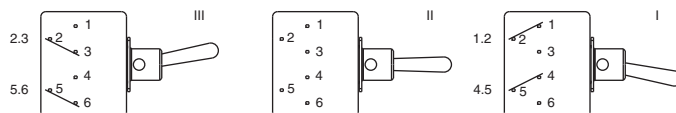
III	II	I
2-3		1-2
5-6		4-5
ON	-	ON
ON	OFF	ON
MOM	OFF	MOM
ON	OFF	MOM
ON	-	MOM



Ø6.50  
(.255 DIA)

Side view of the 3.00M Maxi connector assembly. Dimensions shown are 4.10 (.161) for the cable diameter and 7.80 (.307) for the connector body diameter. The cable is labeled 3.00M Maxi (118MAX).

Bottom view



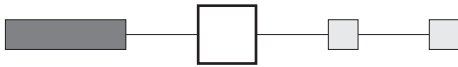
Function 6	ON	-	ON
Function 9	ON	OFF	ON
Function 7	MOM	OFF	MOM
Function 8	ON	OFF	MOM
Function 2	ON	-	MOM



# 21000N series

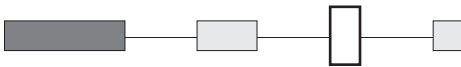
Low profile toggle switches

## CONTACT MATERIALS



**A** Silver  
**LD** Brass, gold plated

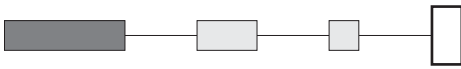
## FINISH



**Blank** Bright chrome finish on actuator, nickel plating for bushing and hardware.

**G** Matt black finish on bushing, actuator and hardware

## SEALING



Epoxy sealed terminals are standard.

**Blank** No sealing except standard.

**K** Bushing internally sealed by one O-ring (version without washer U360). Protects the switch against water and dust.

