



## SPECIFICATIONS

**RATING** : 5-24VADC/1A LOCK MODE.

**POWER** : 5-24V DC

**INDICATOR** : 12-24V DC

**OPERATING LIFE** : 50 Million cycles min.

**CONTACT RESISTANCE** : 1Ω MAX.

**OPERATING TEMPERATURE**: -20°C to 65°C.

## MATERIALS

**BUSHING**: Aluminum alloy / Stainless steel.

**SEALING** : Silicone, EPOXY.

**HEX NUT** : Nickel plated brass.

## HOW TO ORDER

MODEL NO.	BUSHING	CONTACT CONFIGURATION	RATING	BODY TYPE	BUTTON TYPE	LIGHT TYPE	CAP MARKING	LED COLOR	WIRE
TZ	19 19mm 22 22mm	L Lock		F1 Al alloy, Double flated (Natural anodized) F3 Al alloy, Double flated (Black anodized) D0 SUS 304, Double flated D3 SUS 316, Double flated	F Flat M Concave	N Without LED E Illuminated ring	00 No	00 Without LED 3C RGB	
			D4 LOAD 5-24VADC POWER 5-24V DC						D101 26AWG 150mm+2.54 1x6 Connector are only available without LED.

### With LED

**DB01** 26AWG 150mm+2.54 2x4 Connector for model type TZ19L only.

**DA01** 26AWG 150mm+2.54 1x8 Connector for model type TZ22L only.

Note: Please consult sales for additional wire options.

### EXAMPLE:

TZ19L-D4-□FN00-00D101(STD)

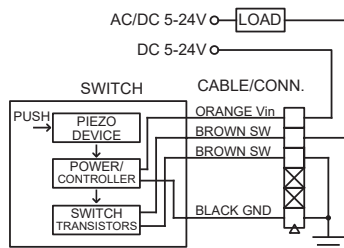
Body options

TZ19L-D4-□FE00-3CDB01(STD)

Body options

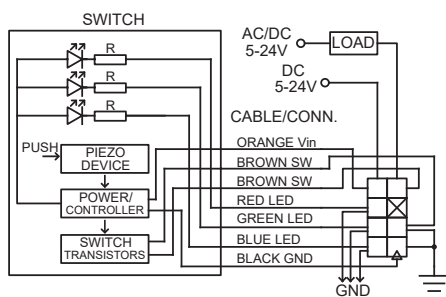
## ▼ CIRCUIT

### 00 Without LED application diagram

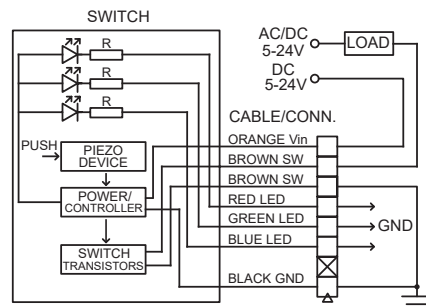


### 3C RGB LED application diagram

Available with TZ19L model only

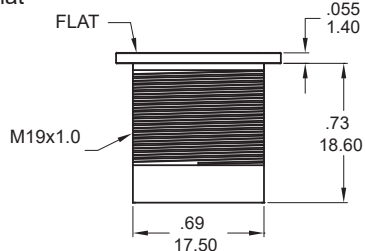


Available with TZ22L model only

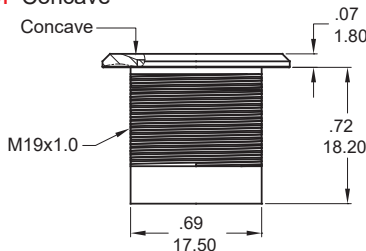


## ▼ BUTTON OPTIONS & PANEL MOUNTING

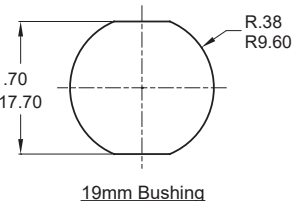
### F Flat



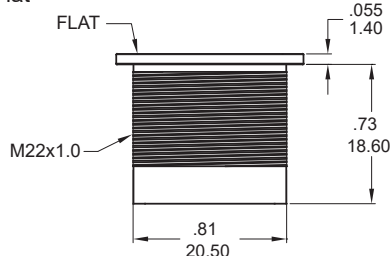
### M Concave



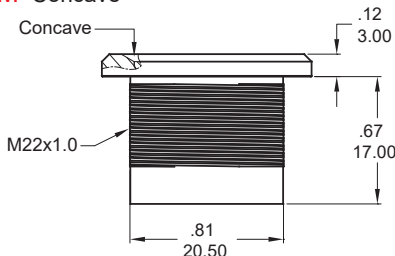
Panel thickness:  
.394inch (10.0mm) Max.



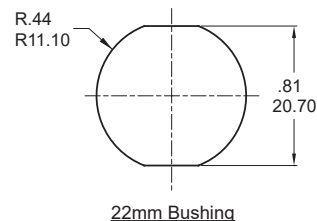
### F Flat



### M Concave

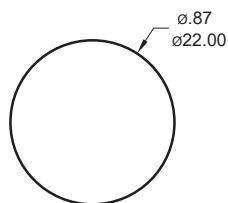


Panel thickness:  
.394inch (10.0mm) Max.

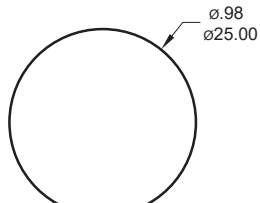


## ▼ LIGHT OPTIONS

### N Without LED (Button type F)

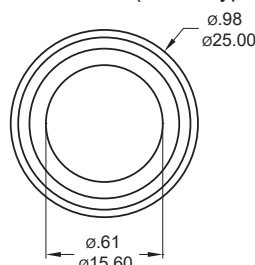


TZ19L

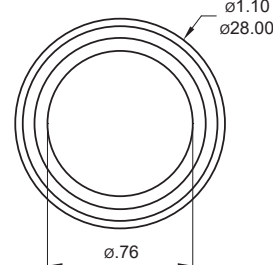


TZ22L

### N Without LED (Button type M)

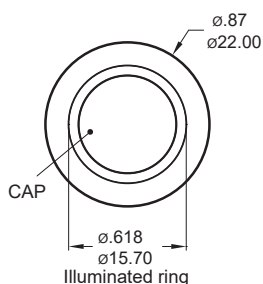


TZ19L

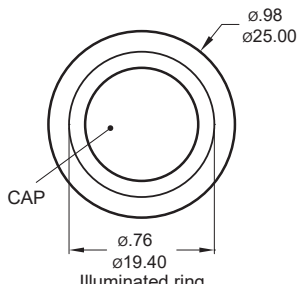


TZ22L

### E Illuminated ring (Button type F)

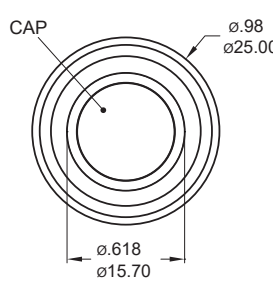


TZ19L

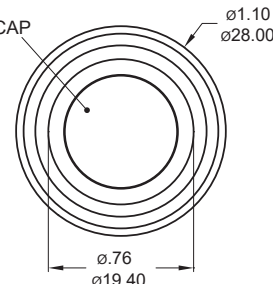


TZ22L

### E Illuminated ring (Button type M)



TZ19L

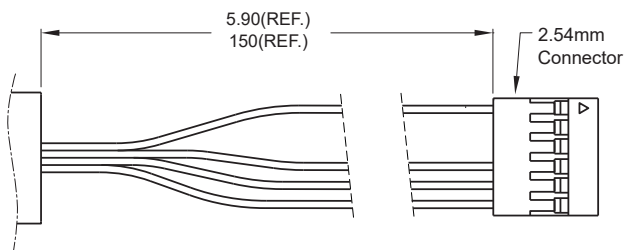


TZ22L



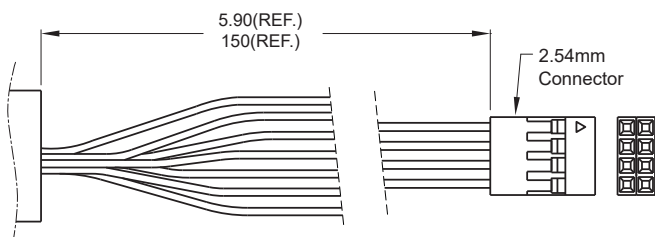
## ▼ WIRE

**D101** Wire leads 26 AWG ※ Available with TZ16 Model only.



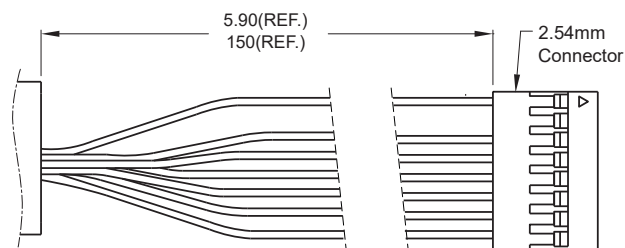
Wires:  
Orange wire - Vin  
Brown wire - SW(Q'TY 2)  
Black wire - GND

**DB01** Wire leads 26 AWG ※ Available with TZ19L Model only.



Wires:  
Orange wire - Vin  
Brown wire - SW(Q'TY 2)  
Red wire - Red LED  
Green wire - Green LED  
Blue wire - Blue LED  
Black wire - GND

**DA01** Wire leads 26 AWG ※ Available with TZ22L Model only.



Wires:  
Orange wire - Vin  
Brown wire - SW(Q'TY 2)  
Red wire - Red LED  
Green wire - Green LED  
Blue wire - Blue LED  
Black wire - GND

## ▼ HARDWARE

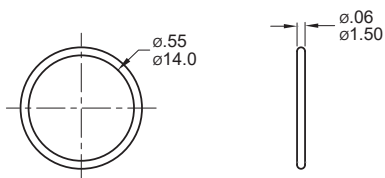
\* Standard hardware : 1 nut, 1 O-ring

\* For further information please consult sales representative.

Available with bushing 19 only

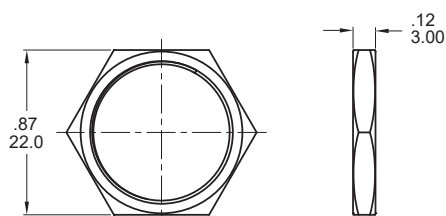
**O-RING (Std.)**

Model name. FCP-PY02



**NUT (Std.)**

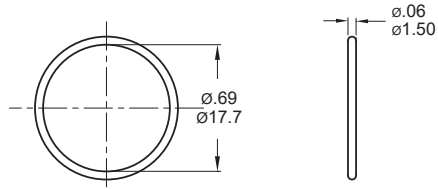
Model name. MNU-MPB01



Available with bushing 22 only

**O-RING (Std.)**

Model name. FCP-MPB07



**NUT (Std.)**

Model name. MNU-MPB02

