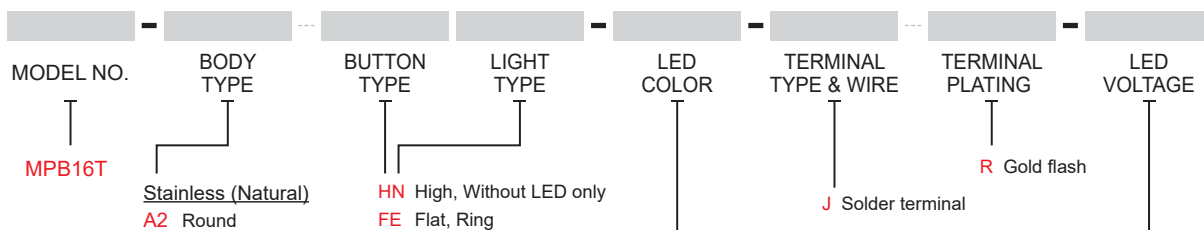


**SPECIFICATIONS****RATING:** 50mA/12VDC.**ELECTRICAL LIFE:** 200,000 make-and-break cycles at full load**MECHANICAL LIFE:** 1,000,000 cycles**INSULATION RESISTANCE:** 100MΩ Min.**DIELECTRIC STRENGTH:** 250V RMS@sea level.**CONTACT RESISTANCE:** 100mΩMax.(Initial value).**OPERATION TEMPERATURE:** -20°C~+70°C**TRAVEL:** 0.85mm±0.25mm.**OPERATION PRESSURE:** 450gf±150gf.**INGRESS PROTECTION:** IP67(In house test)**TORQUE:** 11.5 kgf · cm**MATERIALS****BUSHING:** Stainless Steel**BASE:** Nylon 6/6.**ACTUATOR:** PC (Translucent UL 94-V2)**CAP:** Stainless Steel**RUBBER:** Silicone(Translucent).**SEALING:** Viton.**O-Ring:** Silicone (Translucent).**TERMINAL:** Brass,Gold flash over silver plated.**CONTACT:** Stainless,Silver plated.**HEX NUT:** Brass (Nickel plated).**HOW TO ORDER**

ITEM NO	COLOR
0	Without LED
6	Green

※ Current limiting resistor is required to limit LED forward current to 20mA.
 ※ Other LED colors need to be confirmed

Resistance (About LED Voltage)	
0V	Without Resistance
3V	LED input 3 VDC, 47Ω Note: Red/Yellow/Orange LED type only
6V	LED input 6 VDC, 180Ω
12V	LED input 12 VDC, 470Ω
24V	LED input 24 VDC, 1000Ω

※ ohms value of resistance
tolerance: ±5%

EXAMPLE:
MPB16T-A2HN-0-JR-0 (Without LED)

MPB16T-A2FE-6-JR-□V
□V LED voltage



MPB16T Series

16mm Low current Metal Pushbutton Switches

IP 67
ACCORDING TO
EN 60529 1991+A1:2001
IEC 60529:2001

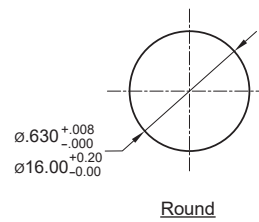
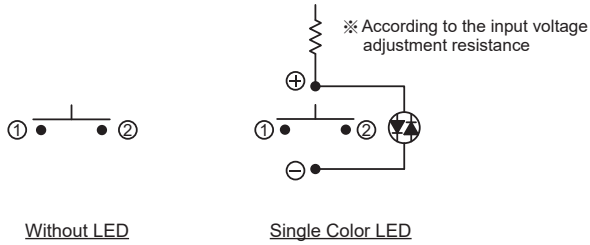
UL US
E 187490

RoHS
compliant

Pb
lead-free

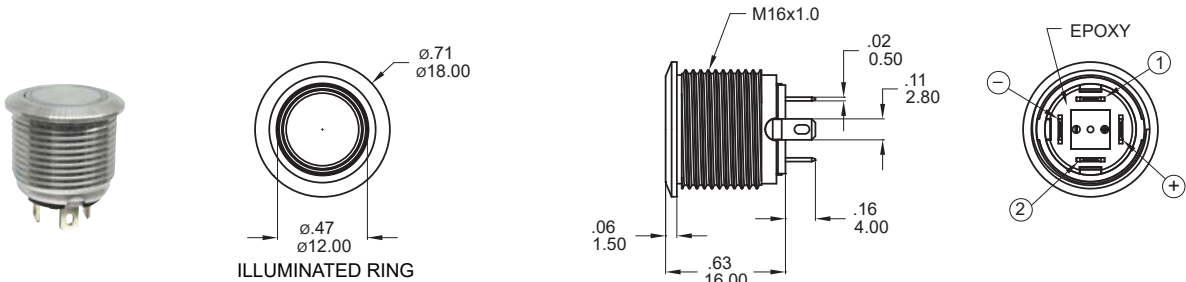
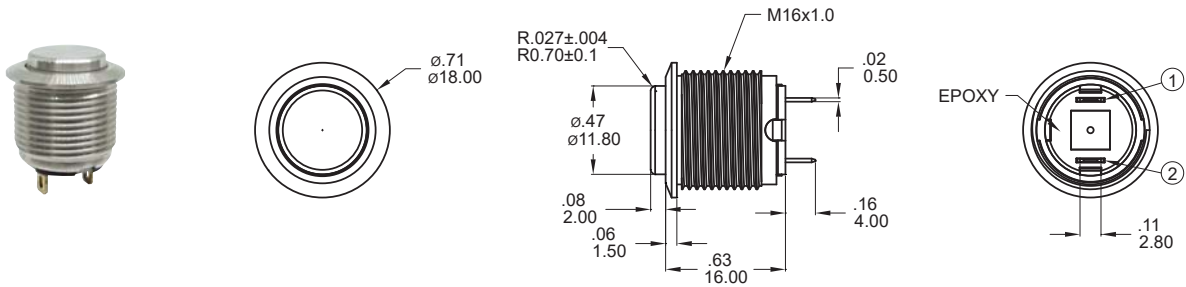
MPB16T
Pushbutton Switches

▼ CIRCUIT AND PANEL MOUNTING



Panel thickness:
8.0 mm (.031inch) MAX.

▼ DIMENSION

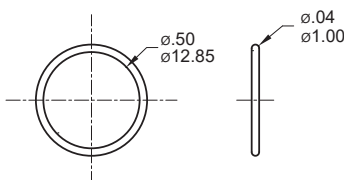


▼ HARDWARE

- * Standard hardware : 1 nut, 1 O-ring
- * For further information please consult sales representative.

O-RING (Std.)

Model name. FCP-MP602



NUT (Std.)

Model name. MNU-PY01

