



TGS02H Series

High Current Sealed Toggle Switch

IP 67
ACCORDING TO
EN 60529 1991+A1:2001
IEC 60529:2001

C_{UL} US
E 187490

RoHS
compliant

Pb
lead-free

TGS02H
Toggle Switches



SPECIFICATIONS

CONTACT RATING: Dependent upon contact material, see page 26.

MECHANICAL LIFE: 30,000 make-and-break cycles.

CONTACT RESISTANCE: 20 mΩ max. (initial value) @ 2-4VDC
100mA for both silver and gold plated contacts.

INSULATION RESISTANCE: 1,000 MΩ min./500VDC

DIELECTRIC STRENGTH: 1,500 Vrms min.@sea level.(initial value)

OPERATING TEMPERATURE: -30°C to 85°C.

MATERIALS

CASE: Diallyl phthalate (NYLON) (UL94v-0)

ACTUATOR: Brass, chrome plated.

BUSHING: Zin+Silicon.

TERMINAL/CONTACT: Copper.(See page 26)







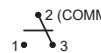
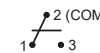
HOW TO ORDER

MODEL NO.	WATERPROOF	FUNCTION TYPE	ACTUATOR	BUSHING	TERMINAL TYPE	TERMINAL PLATING	TERMINAL PLATING TYPE	RoHS SOLDERING
TGS02H	A Waterproof	SP S1 ON-NONE-ON S2 ON-NONE-(ON) S4 (ON)-OFF-(ON)	T1 16.73 high	B1 11.8 high	M1 Screw locking M2 Quick connect	N Nickel plated	1 Nickel plated 3um	S RoHS & Lead Free

EXAMPLE: TGS02H-AS1T1B1M1N1S

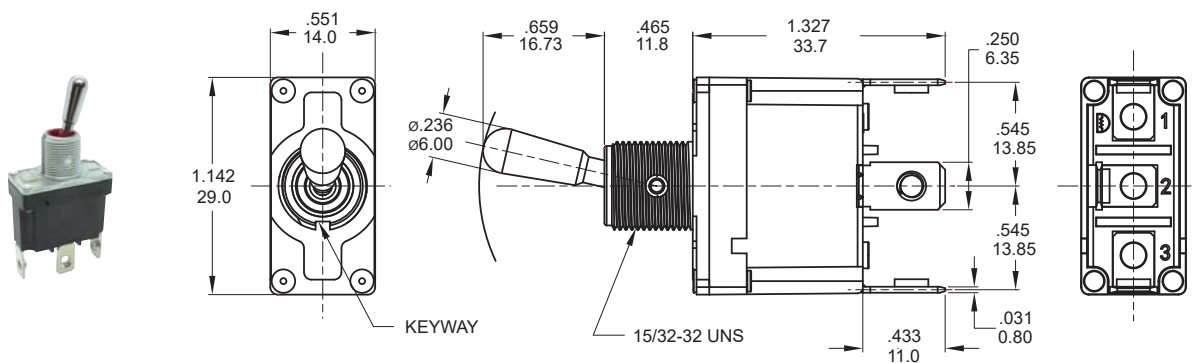


▼ SWITCH FUNCTION

NO. POLES	TYPE	SWITCH FUNCTION			CONNECTED TERMINALS / SCHEMATIC		
		POS.1	POS.2	POS.3	POS.1	POS.2	POS.3
							
SP	S1	ON	NONE	ON	2-3 	N/A	2-1 
	S2	ON	NONE	(ON)		OPEN	
	S4	(ON)	OFF	(ON)			

()=MOMENTARY

▼ POLE OPTIONS

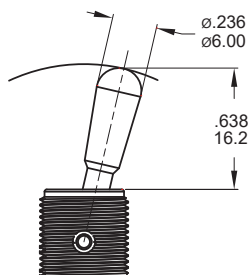


SPDT

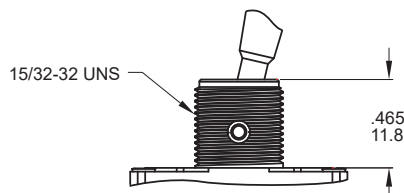
Model name. TGS02H-AS1T1B1M1N1S

▼ ACTUATOR & BUSHING OPTIONS

T1 STD

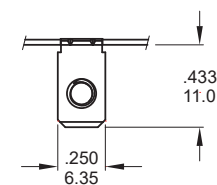


B1 STD



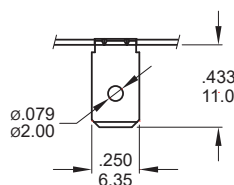
▼ TERMINAL OPTIONS

M1 Screw locking



.031inch(0.80mm) THK.

M2 Quick connect

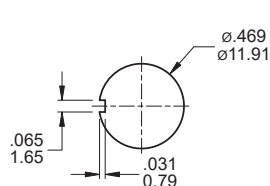


.031inch(0.80mm) THK.

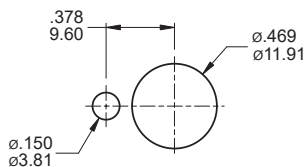


▼ PANEL MOUNTING

15/32 IN BUSHING



Without locking ring (Keyway)



With standard locking ring.

▼ HARDWARE

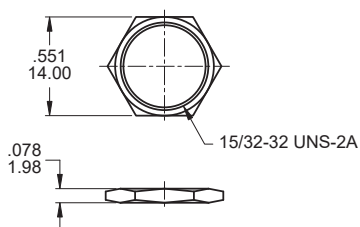
EXAMPLE: ☐ ☐
Model name. 5 Standard hardware

* Standard : 2 nut, 1 locking ring, 1 lockwasher

* For further information please consult sales representative.

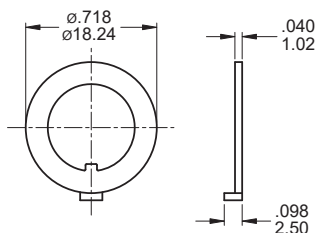
15/32 NUT (Std.)

Model name. MNU1M07



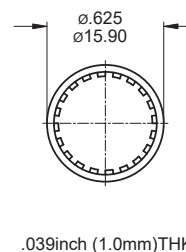
LOCKING RING (Std.)

Model name. MNU-1M08



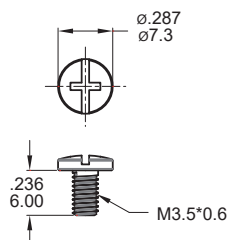
LOCKWASHER (Std.)

Model name. MNU-1M09



M3.5 SCREW (Std.)

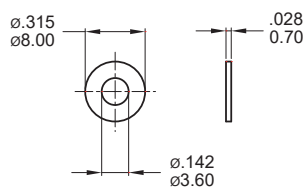
Model name. MNU-1H01



For M1 Terminal

WASHER (Std.)

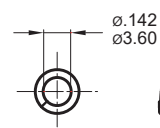
Model name. MNU-1H02



For M1 Terminal

SPRING WASHER (Std.)

Model name. MNU-1H05



For M1 Terminal

▼ CONTACT & TERMINAL PLATING OPTIONS

CONTACT PLATING		TERMINAL PLATING		RATINGS
N	Silver	1	Nickel	12 Amps @125/250 VAC.

▼ SOLDERING PROCESS

MANUAL SOLDERING: Use 30 watts soldering iron and controlled the temperature at 350°.

Duration of solder immersion: Max. 5 sec.

WAVE SOLDERING: Recommend soldering temperature: 260 ± 5°C

Duration of solder immersion: Max. 5 sec. (PCB thickness is 1.6mm)