

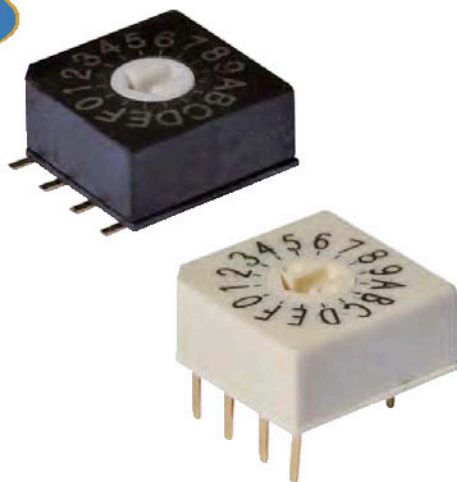


RS09 Series

# ROTARY DIP SWITCH 10x10 Size, Height: 4.5mm, 4x1 Terminal

**NEW**

**RS09**  
Series

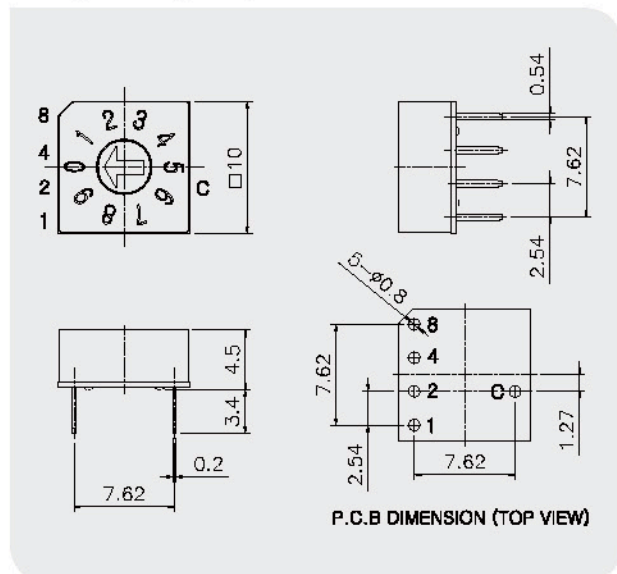


## General Specification

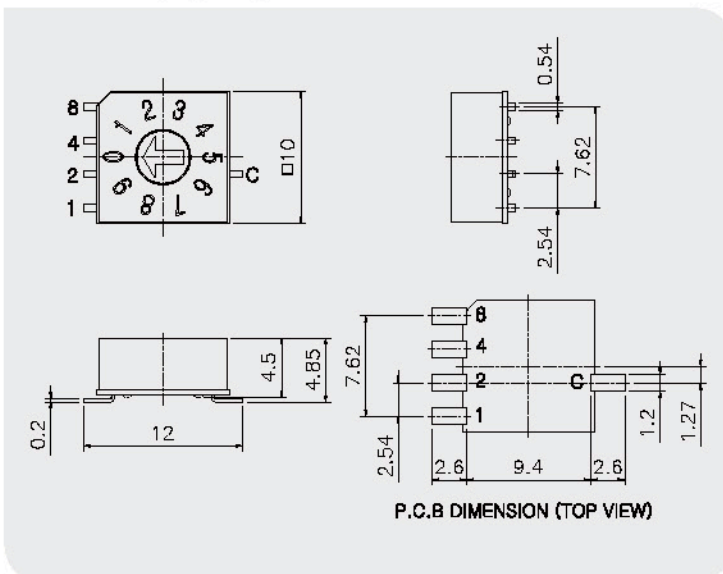
- Rating :** 25mA, 12V DC (Switching)  
25mA, 24V DC (None-Switching)
- Contact Resistance :** 100mΩ Max.
- Insulation Resistance :** 100MΩ Min at DC 250V
- Operating Force :** 700gf Max.
- Life Cycle :** 10,000 steps
- Sealing :** IP67 (Dust & Water proof)

## GENERAL DIMENSION

### Through Hole Type Layout



### SMD Gull Wing Type Layout



## HOW TO ORDER

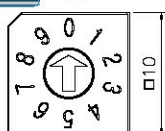
RS09	D	R	10	S	—
Cover Type	Actuator	Code	Position	Terminal	Packing
RS09 Square (Ter 4x1) Position of Number 0 = 0° RS09A Square (Ter 4x1) Position of Number 0 = -90°	D Arrow (Height = 0mm)	R Real Code C Complement Code G Gray Code *Other special codes are available upon the request.	04 4 Position 06 6 Position 08 8 Position 10 10 Position 16 16 Position	- Through-Hole (Ter 4x1) S SMD Gull Wing (Ter 4x1)	- Tube Packing TR Reel Packing

# ROTARY DIP SWITCH 10x10 Size, Height : 4.5mm, 4x1 Terminal

## 1. Cover Type

RS09 - - - -

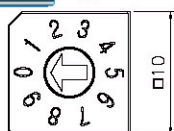
RS09 Type



H Type

Position of printed No.0 (0°)

RS09A Type



HA Type

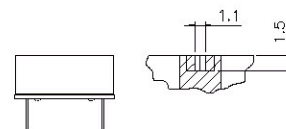
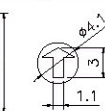
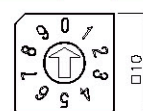
Position of printed NO.0 (-90°)

## 2. Actuator

- D - - - -

D

Arrow  
(Height = 0mm)



## 3. Code & Position

R RealCode

C ComplementCode

S Decimal Code

16 Position	10 Position	08 Position	06 Position	04 Position	Real Code
					C 1 2 4 8
0					0
1					1
2					2
3					3
4					4
5					5
6					6
7					7
8					8
9					9
A					A
B					B
C					C
D					D
E					E
F					F

16 Position	10 Position	08 Position	06 Position	04 Position	Complement Code
					C 1 2 4 8
0					0
1					1
2					2
3					3
4					4
5					5
6					6
7					7
8					8
9					9
A					A
B					B
C					C
D					D
E					E
F					F

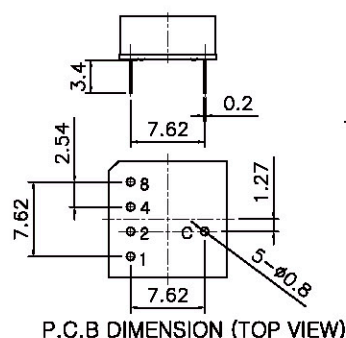
04 Position	Decimal Code
	C 1 2 3 4
1	1
2	2
3	3
4	4

\* Special Codes are available upon the request.

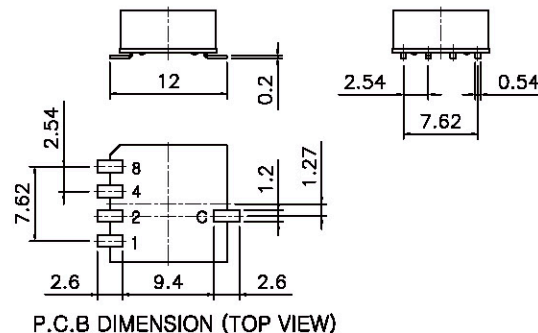
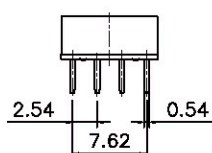
## 4. Terminal

- Through-Hole (Ter' 4x1)

S SMD Type (Ter' 4x1)



P.C.B DIMENSION (TOP VIEW)

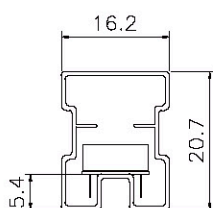


P.C.B DIMENSION (TOP VIEW)

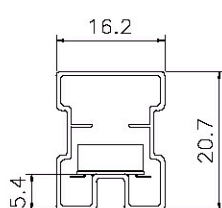
## 5. Packing

- Tube Packing (Q'ty: 50Pcs/Tube)

TR



Through-Hole Type

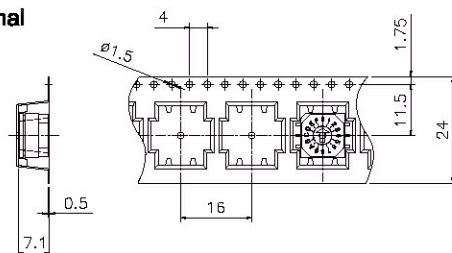


SMD Type

Reel Packing  
(See Page 29)

**ROTARY DIP SWITCH 10x10 Size Tape & Reel Packing****1. 'D' Type Actuator with SMD Terminal**

(RS09-DR-xxS)



Units(pcs)

600

