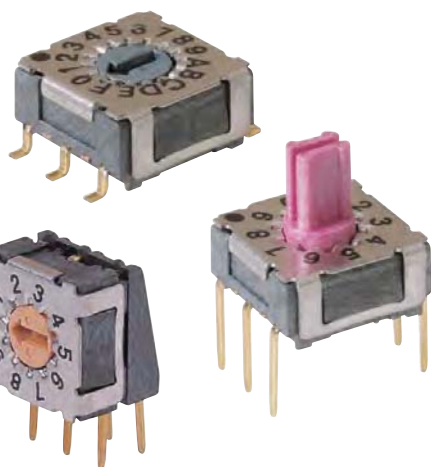


## MINI ROTARY DIP SWITCH 7.4x7.4 Size, Height: 3.65mm

**RS01**  
**RS02**  
**RS03**  
**Series**

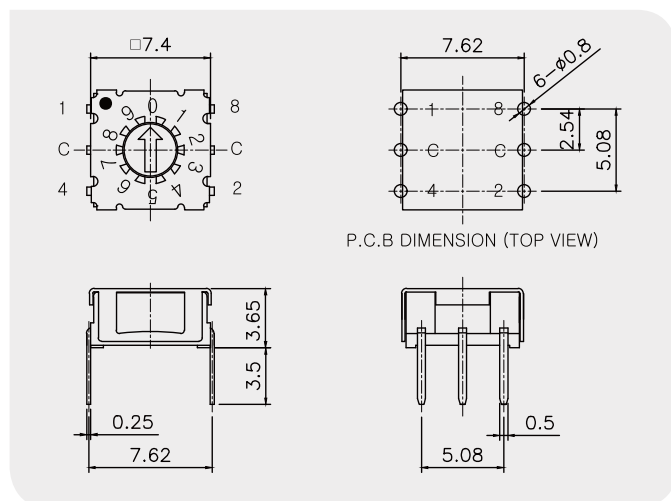


## General Specification

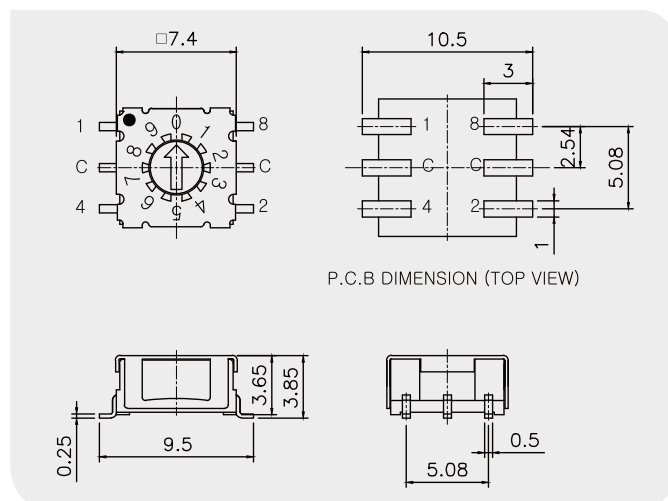
- |                                   |   |
|-----------------------------------|---|
| <b>1. Rating :</b>                | 100mA, DC 42V (Switching)<br>400mA, DC 42V (None-Switching) |
| <b>2. Contact Resistance :</b>    | 80mΩ Max.   |
| <b>3. Insulation Resistance :</b> | 100MΩ Min at DC 250V  |
| <b>4. Operating Force :</b>       | 120±30gf Max.   |
| <b>5. Life Cycle :</b>            | 25,000 steps  |
| <b>6. Sealing :</b>               | IP67 (Dust & Water proof)                                   |

## GENERAL DIMENSION

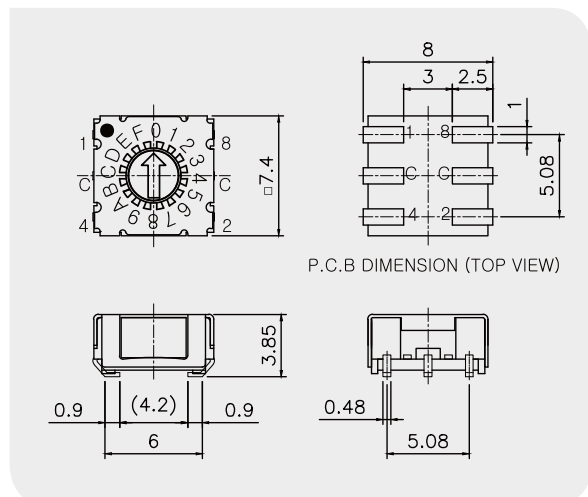
### Through Hole Type Layout



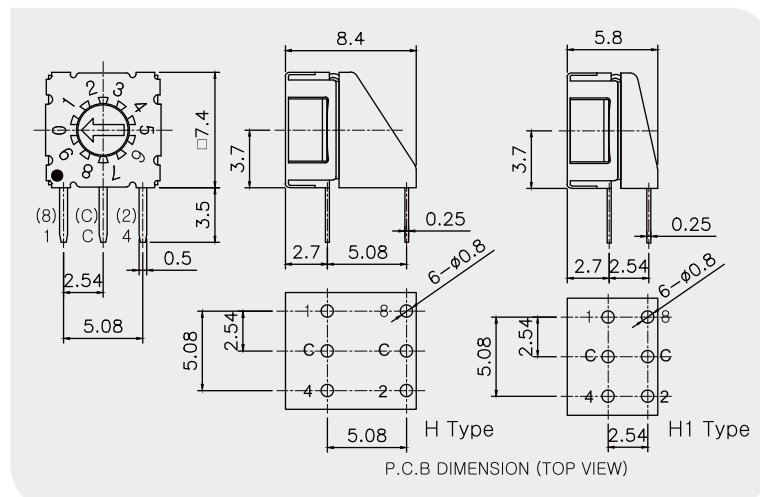
### SMD Gull Wing Type Layout



### SMD – J Hook Type Layout



Angle Type Layout (H:5.08mm, H1:2.54mm)



# MINI ROTARY DIP SWITCH 7.4x7.4 Size, Height: 3.65mm

## HOW TO ORDER

RS0x

-

D

-

R

10

S

TR

### Type

**RS01** Position of printed No.0 (0°)  
Ter' Circuit (1-C-4 / 8-C-2)

**RS02** Position of printed No.0 (-90°)  
Ter' Circuit (1-C-4 / 8-C-2)

**RS03** Position of printed No.0 (-90°)  
Ter' Circuit (1-C-2 / 4-C-8)  
H Type (+90°)

### Actuator

**D** Arrow  
(Height = 0mm)

**S** Spindle  
(Height = 4.5mm)

**K** Slotted spindle  
(Height = 4.2mm)

**G** Slotted spindle  
(Height = 1mm)

### Code

**R** Real Code  
**C** Complement Code  
**G** Gray Code

\*Other codes are available upon the request.

### Position

**04** 4 Position  
**10** 10 Position  
**16** 16 Position

### Terminal

**-** Through-Hole (Ter' 3x3)  
**C** Through-Hole (Ter' 3x2)  
**S** SMD Gull Wing (Ter' 3x3)  
**SC** SMD Gull Wing (Ter' 3x2)  
**J** J - Hook SMD (Ter' 3x3)  
**JC** J - Hook SMD (Ter' 3x2)  
**H** Right Angle 5.08mm  
**H1** Right Angle 2.54mm

### Packing

**-** Tube Packing  
**TR** Reel Packing

## 1. Type

RS0x

-

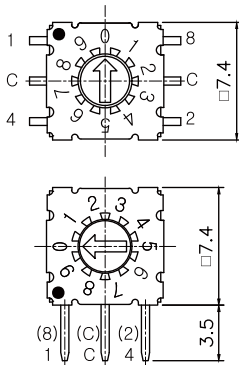
-

-

-

RS01

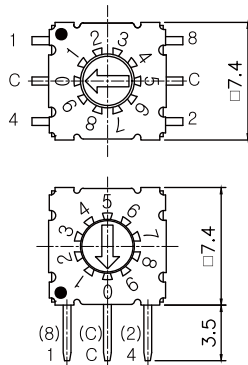
Type



MS: Position of Number 0 = 0°  
Ter' Circuit (1-C-4 / 8-C-2)

RS02

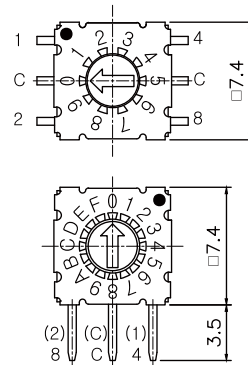
Type



MA: Position of Number 0 = -90°  
Ter' Circuit (1-C-4 / 8-C-2)

RS03

Type

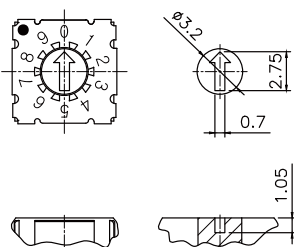


MD: Position of Number 0 = -90°  
(Angle Type 0=+90°)  
Ter' Circuit (1-C-2 / 4-C-8)  
\* Only 16 Position for Angle Type (MD)

## 2. Actuator

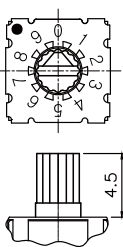
D

Arrow (Height = 0mm)

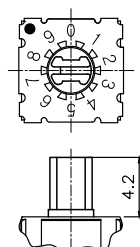


S

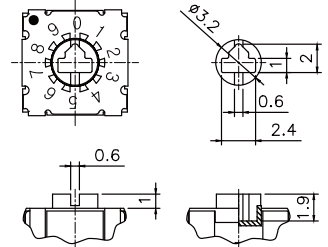
Spindle (Height = 4.5mm)



K

Slotted Spindle  
(Height = 4.2mm)

G

Slotted Spindle  
(Height = 1mm)



# RS01-RS03 Series

## MINI ROTARY DIP SWITCH 7.4x7.4 Size, Height: 3.65mm

### 3. Code & Position

**R** Real Code
 

16 Position	10 Position	Real Code
		C 1 2 4 8
0		
1		
2		
3		
4		
5		
6		
7		
8		
9		
10		
11		
12		
13		
14		
15		

**C** Complement Code
 

16 Position	10 Position	Complement Code
		C 1 2 4 8
0		
1		
2		
3		
4		
5		
6		
7		
8		
9		
10		
11		
12		
13		
14		
15		

**G** Gray Code
 

10 Position	Gray Code
	C 1 2 4 8
0	
1	
2	
3	
4	
5	
6	
7	
8	
9	

**M**

04 Position	Decimal Code
	C 0 1 2 3
0	
1	
2	
3	

(Top View)

Only MS Type

**N**

04 Position	Decimal Code
	C 1 2 3 4
1	
2	
3	
4	

(Top View)

Only MS Type

\* Other special codes are available upon the request.

### 4. Terminal

**—** Through-Hole (Ter' 3x3)
 

P.C.B DIMENSION (TOP VIEW)

**C** Through-Hole (Ter' 3x2)
 

P.C.B DIMENSION (TOP VIEW)

**S/SC** SMD Type (Ter' 3x3, Ter' 3x2)
 

P.C.B DIMENSION (TOP VIEW)

**J/JC** J - Hook SMD (Ter' 3x3, Ter' 3x2)
 

P.C.B DIMENSION (TOP VIEW)

**H** Angle Type 5.08mm (Ter' 3x3)
 

P.C.B DIMENSION (TOP VIEW)

**H1** Angle Type 2.54mm (Ter' 3x3)
 

P.C.B DIMENSION (TOP VIEW)

### 5. Packing

**—** Tube Packing (Q'ty: 70Pcs/Tube)

**TR**

D Type Actuator

S, K Type Actuator

SMD & J - Hook Type

Angle Type (H, H1)

Reel Packing  
(See Page 17)

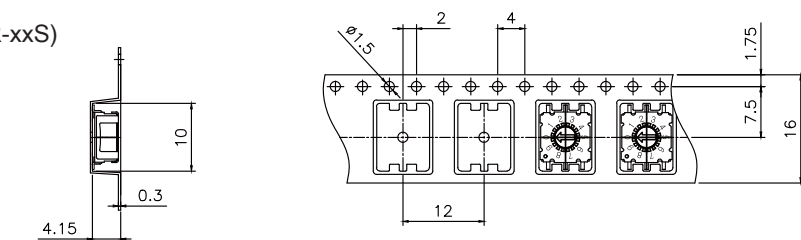


# RS01-RS03 Series

## MINI ROTARY DIP SWITCH 7.4x7.4 Size, Height: 3.65mm Tape & Reel Packing

### 1. 'D' Type Actuator with SMD Terminal

(RS0x-DR-xxS)



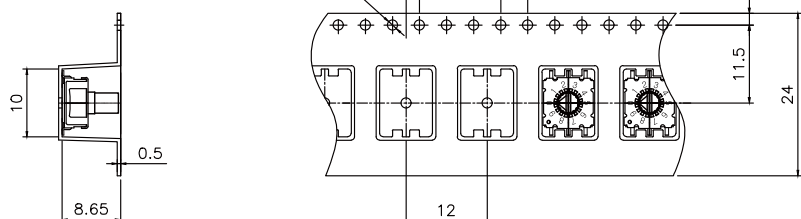
Units(pcs)

1,300

### 2. 'S' & 'K' Type Actuator with SMD Terminal

(RS0x-SR-xxS)

(RS0x-KR-xxS)

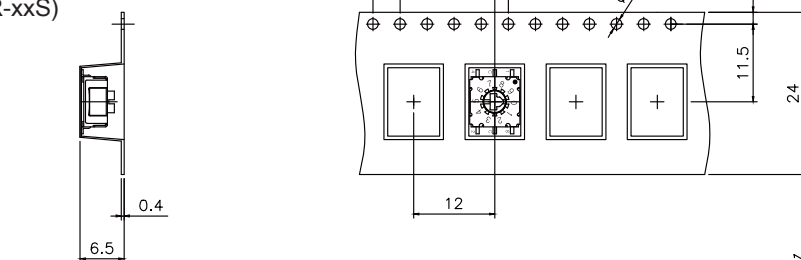


Units(pcs)

600

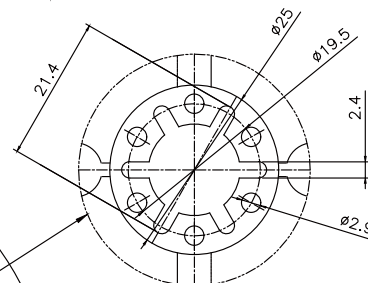
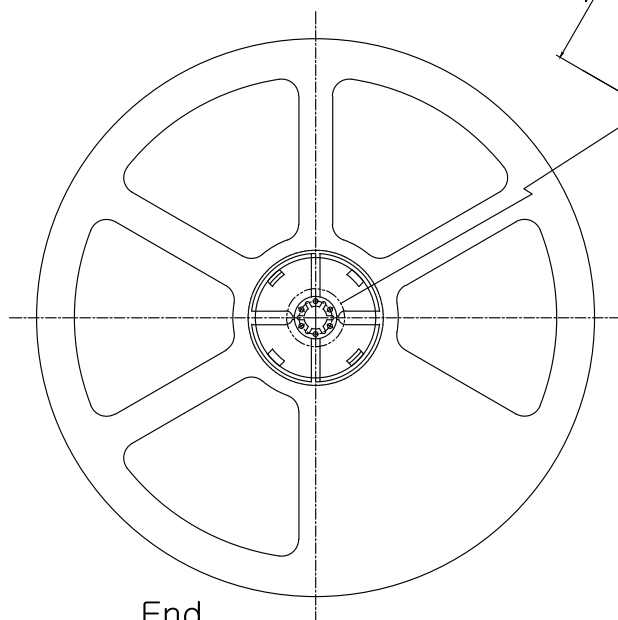
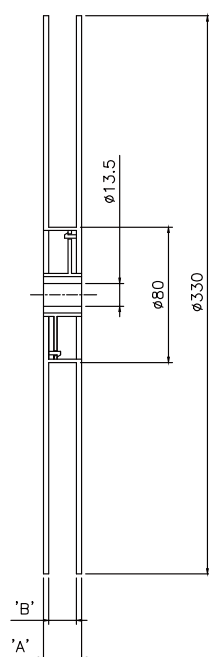
### 3. 'G' Type Actuator with SMD Terminal

(RS0x-GR-xxS)



Units(pcs)

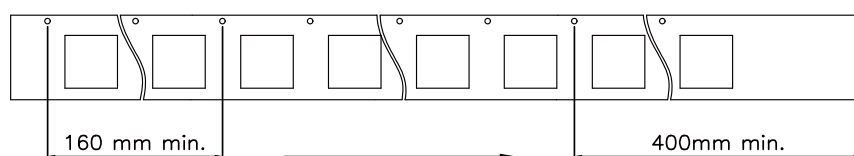
800



Actuator	A	B
1. D Type	22.4	16.4
2. S&K&G Type	30.4	24.4

End

Start



End Section

Direction of Section

Advance