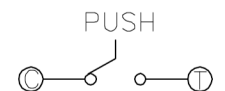


TER	ANG.	0° (▨=NO)			
		(20°)	(15°)	(15°)	(20°)
①		▨			
②					▨
③		▨	▨	▨	▨

CCW ← → CW

CODE TABLE



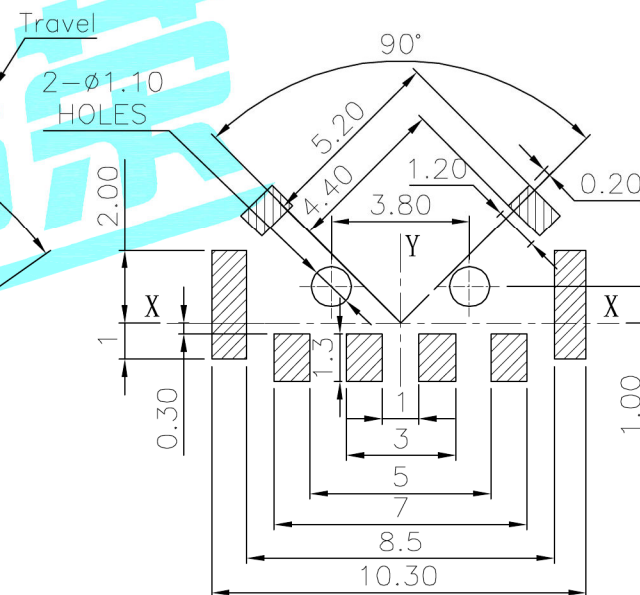
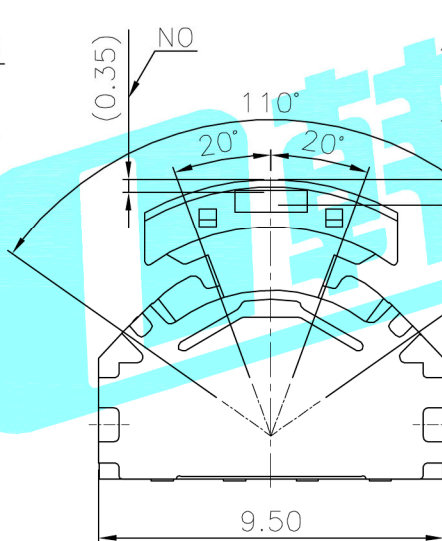
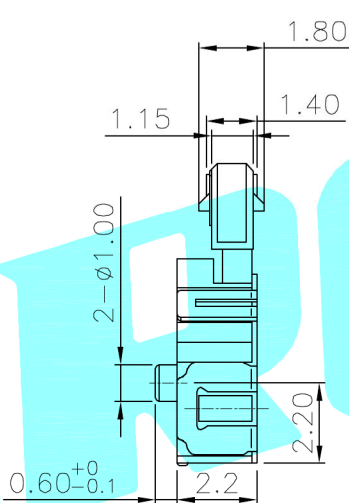
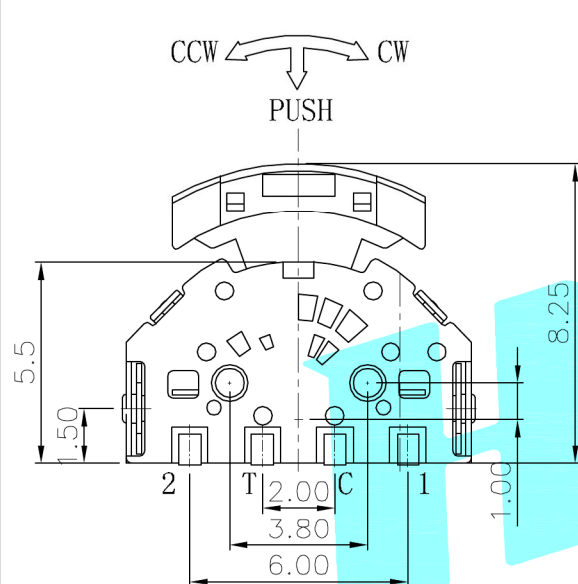
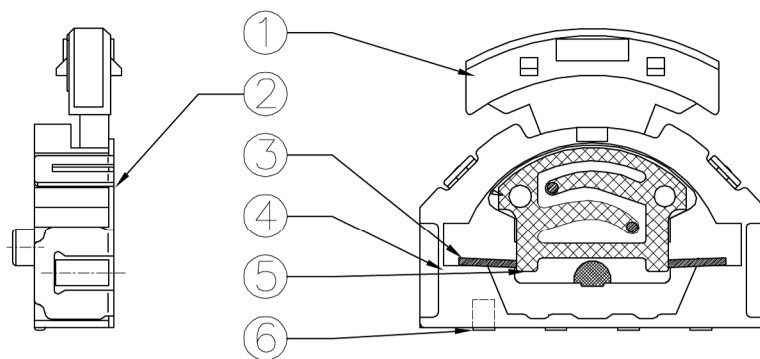
Circuit Diagram

NOTE:

Operating Force:

lever portion 100 ± 30 gf

Push portion 205 ± 50 gf

P.C.B Mounting
Pattern Dimension

⑥	Contact	—	1	F.Ag/Brass	—	—
⑤	Terminal	—	4	Brass(0.15t)	Plating silver	—
④	Base	—	1	Nylon	Black	—
③	Spring	—	1	SUS	—	—
②	Cover	—	1	SUS	Whitie	—
①	Keystoke	—	1	Nylon	Black	—
ITEM	PART NAME	TER'NO.	QTY.	MATERIAL	FINISHING	REMARK

APPROVALS

DATE

DRAWN

J.X.Zhang

2013/8/5

CHECKED

APPROVALS

TITLE:

MULTIFUNCTIONAL SWITCHES

PART NO.

K1-1519SA-02

TOLERANCES ARE

30~以上

10~30

5~10

~ 5

±0.30

±0.20

±0.15

±0.10

ANGLE

UNIT: mm

SCALE: 1:1

DRAWING NO.

PROJ:

SHEET

1 OF 1

±2'

PROJ:

SHEET

1 OF 1

ECN NO.	REV.	DATE.	DESCRIPTION.	CHANGE.	CHECK.	APPRO.
	A		NEW			