



SPECIFICATIONS

CONTACT RESISTANCE : 10 mΩ MAX.

INSULATION FORCE: Push Force: 2000±500g
Pull Force: 2100±600g
Total Travel: 2mm±0.2

OPERATING LIFE :

Electronics Life: 4A,24VDC,10 000cycles
Mechanical Life: 6-8 Operation cycles per minute,100,000cycles

OPERATING TEMPERATURE: -40±3°C(96hours)to+ 85±3°(96hours)

DIELECTRIC STRENGTH:

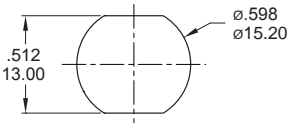
1,000V RMS 50HZ MIN.Between terminals
2,000V RMS 50HZ MIN.Between terminals and metal panel

CIRCUIT / PANEL MOUNTING

CIRCUIT

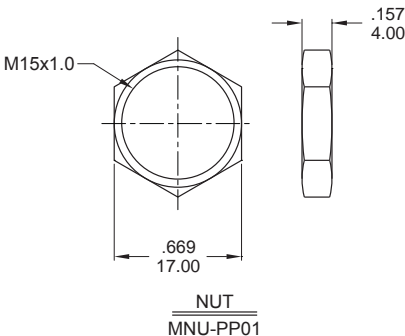
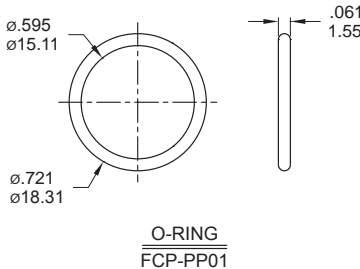
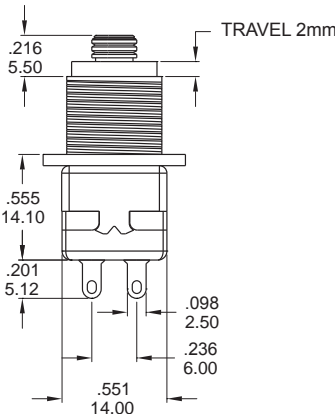
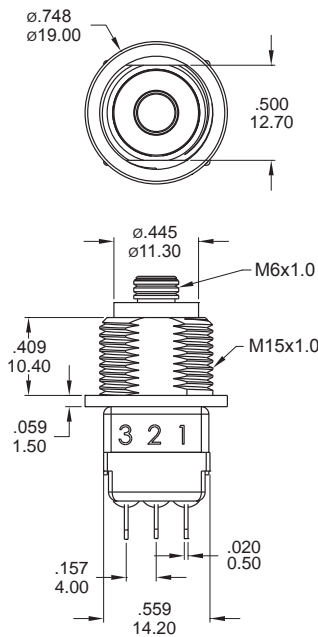
NO. POLES	Pull	ON	1-3 4-6
	Push	ON	1-2 4-5

DECOUPE DU PANNEAU PANEL CUT-OUT



PTW
Push-Pull switches

Part No. Shown : PTW-003

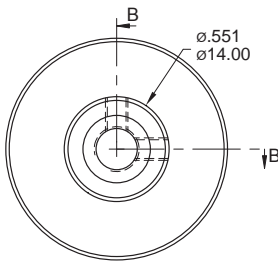
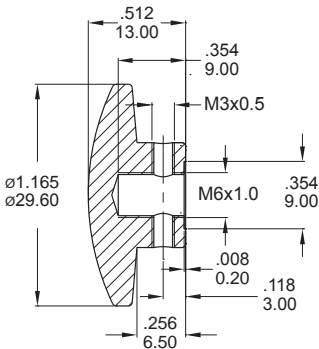


CAP

Part No. Shown : CP-PP04-3



MATERIAL: Aluminum
SURFACE TREATMENT: Anodized,RED



SECTION B-B