



SPECIFICATIONS

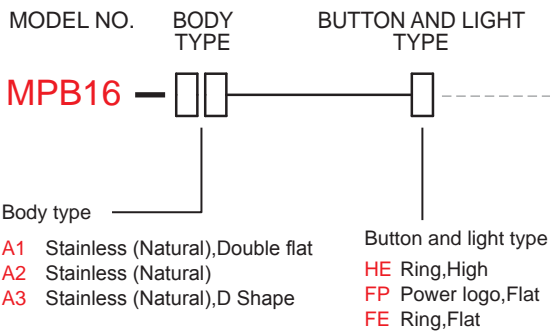
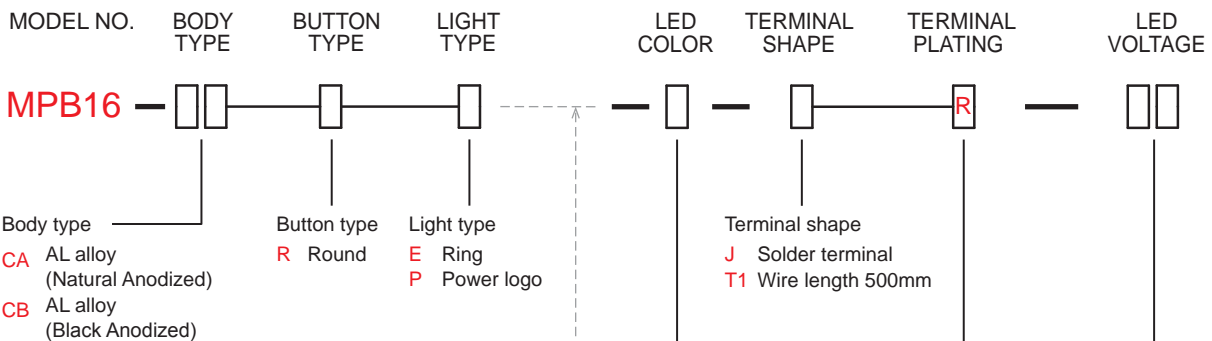
RATING : 2A/36VDC
ELECTRICAL LIFE : 200,000 make-and-break cycles at full load
MECHANICAL LIFE : 1,000,000 cycles
INSULATION RESISTANCE : 1,000 MΩ min. at 500VDC
DIELECTRIC STRENGTH : 2,000V RMS @ sea level
CONTACT RESISTANCE : 50 mΩ max.
OPERATION TEMPERATURE : -20°C~+70°C
TRAVEL: About 2.0±0.20mm
OPERATION PRESSURE : 4.5N±1.5N
INGRESS PROTECTION : IP67
TORQUE : 11.5 kgf · cm
THICKNESS : 8.0mm (Max.)
Current limiting resistor is required to limit LED forward current to 20mA.

MATERIALS

BUSHING : Aluminum alloy / Stainless Steel
BASE : PBT (UL 94-V0)
ACTUATOR : PC (Translucent UL 94-V2)
CAP : Aluminum alloy / Stainless Steel
SPRING : Steel.
SEALING : Silicone (Translucent).
O-Ring : Silicone (Translucent).
TERMINAL : Brass ,Gold flash plated.
CONTACT : Silver alloy.
HEX NUT : Brass (Nickel plated).

HOW TO ORDER

IP 67
ACCORDING TO
EN 60529:1991+A1:2001
IEC 60529:2001



LED color	
ITEM NO	COLOR
0	Without LED
1	White
3	Red
4	Orange
5	Yellow
6	Green
7	Blue
DUAL COLOR LED	
A	Red&Green
RGB COLOR LED	
RGB	RGB

Accessories

Resistance (About LED Voltage)	
0V	Without Resistance
3V	LED input 3 VDC, 47Ω * Red/Yellow/Orange LED type only
6V	LED input 6 VDC, 180Ω
12V	LED input 12 VDC, 470Ω
24V	LED input 24 VDC, 1000Ω

※ ohms value of resistance tolerance: ±5%

EXAMPLE:
MPB16-CARE-0-JR-0 (Without LED)
MPB16-CARE-□-JR-□V
LED color LED voltage

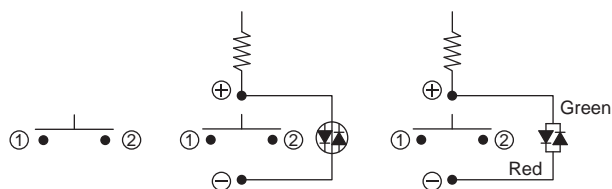


MPB16 Series

16mm Metal Pushbutton Switches

CIRCUIT

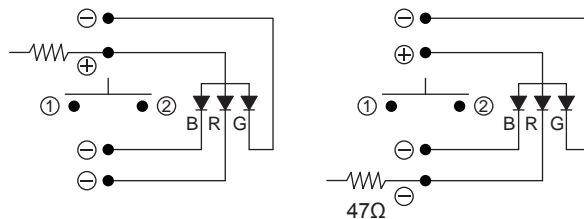
※ According to the input voltage adjustment resistance



Without Led

Single Color Led

Dual Color Led



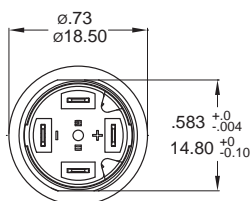
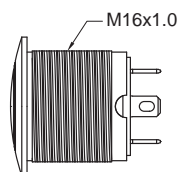
For 6V/12V/24V

For 3V

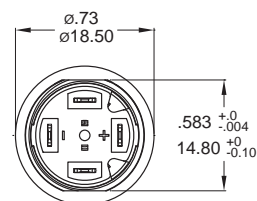
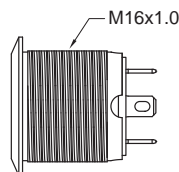
RGB Color Led

BODY TYPE

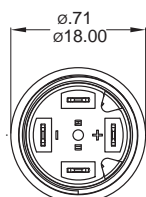
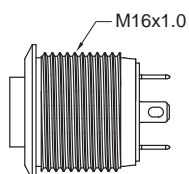
CA/CB Aluminum alloy



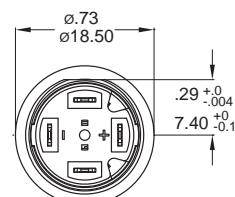
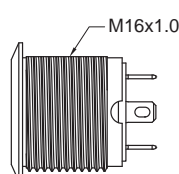
A1 Stainless Steel



A2 Stainless Steel



A3 Stainless Steel (D Shape)

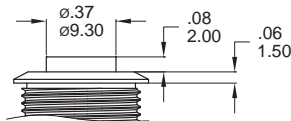


BUTTON TYPE

R Round Button



H High Button

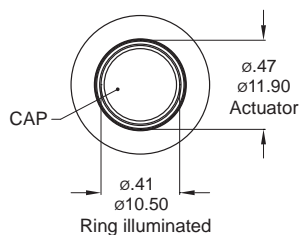


F Flat Button

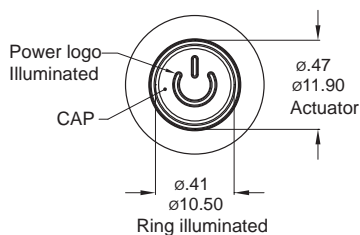


LIGHT TYPE

E Ring, Round



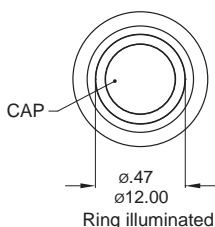
P Power logo, Round



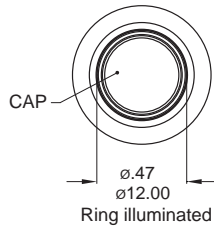
* E,P light type only for CA,CB body.

* HE,FE,FP light type only for A1,A2,A3 body.

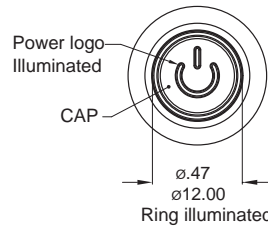
HE Ring, High



FE Ring, Flat

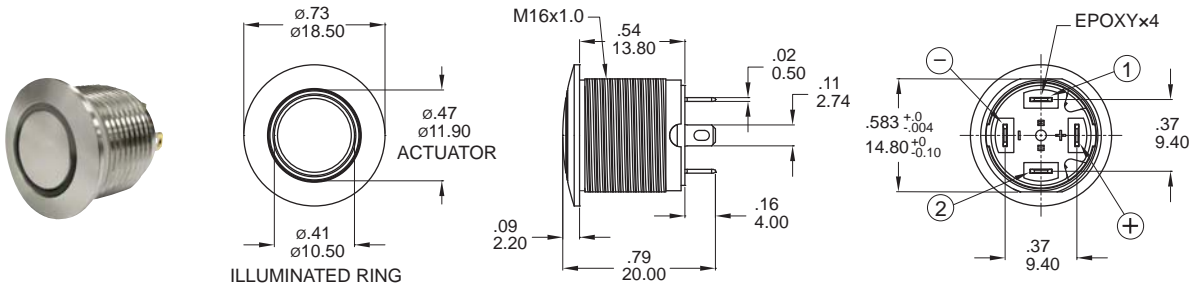


FP Power logo, Flat



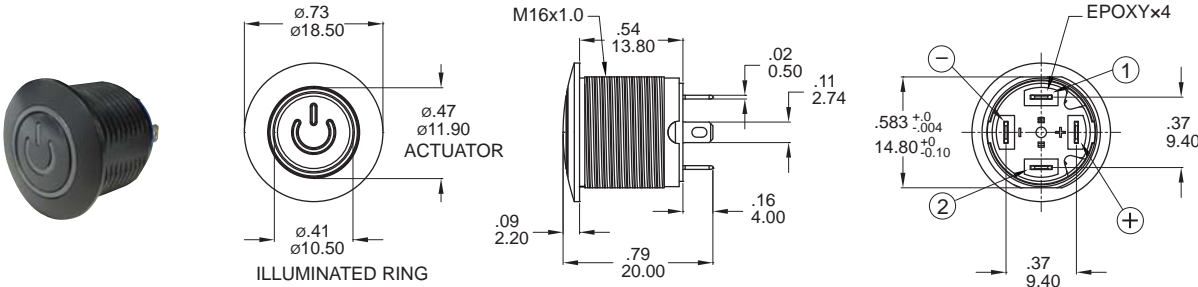
DIMENSION

E Ring



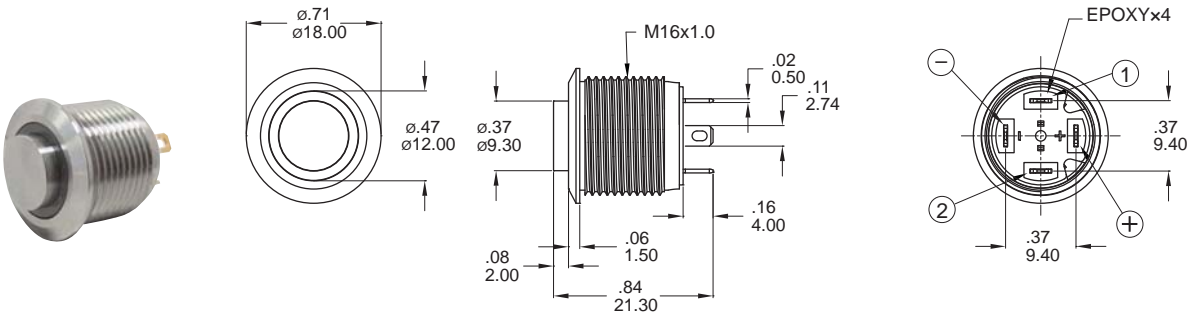
Part No. Shown : MPB16-CARE-□-JR-0V

P Power logo



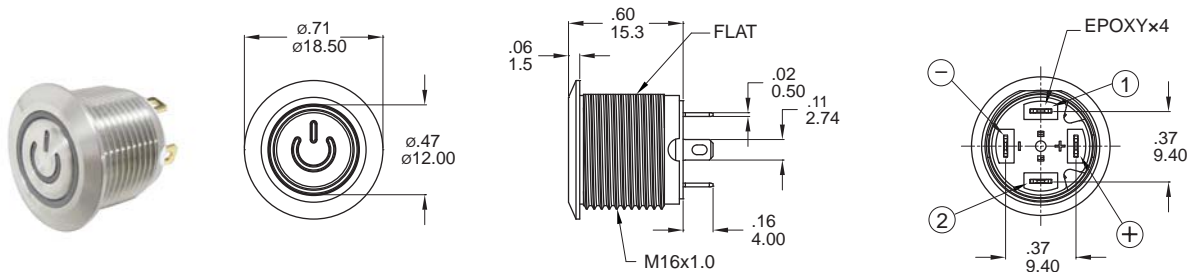
Part No. Shown : MPB16-CBRP-□-JR-0V

HE Ring



Part No. Shown : MPB16-A2HE-□-JR-0V

FP Power logo



Part No. Shown : MPB16-A3FP-□-JR-0V



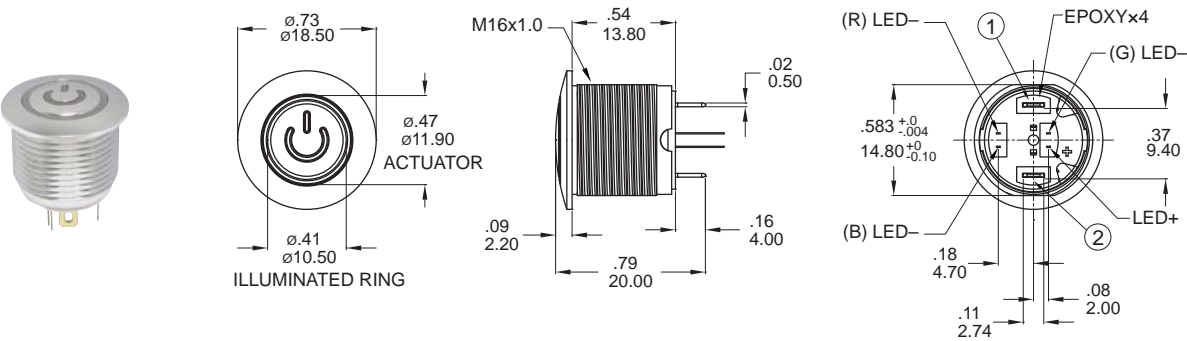
MPB16
Pushbutton Switches

MPB16 Series

16mm Metal Pushbutton Switches

DIMENSION

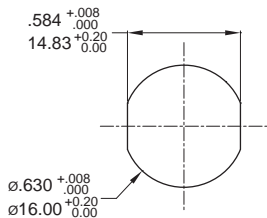
E Ring



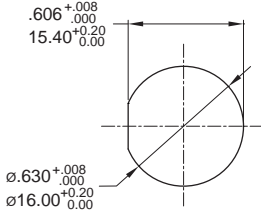
PANEL CUTOUT / HARDWARE

PANEL CUTOUT

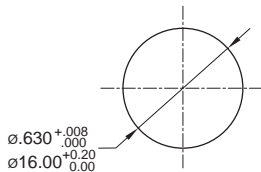
CA/CB/A1 Type



A3 Type

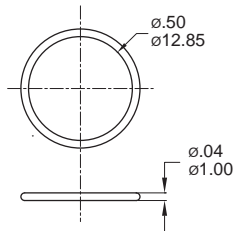


A2 Type

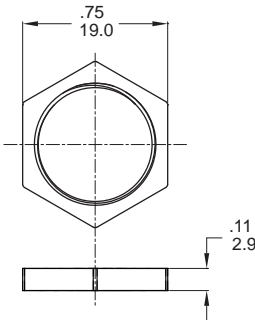


HARDWARE

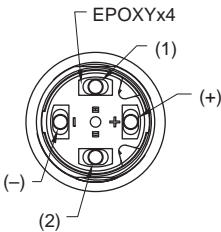
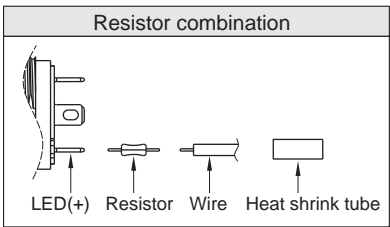
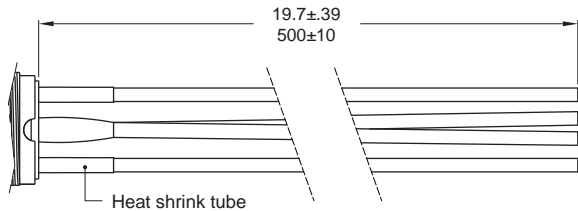
O-RING



M16 NUT



T1 ※Wire=Multi-wire lead AWG20,section 0.6mm²,UL approved



Non-LED

DESCRIPTION	WIRE COLOR
TERMINAL 1	BLACK
TERMINAL 2	BLACK

With LED

DESCRIPTION	WIRE COLOR
TERMINAL 1	BLACK
TERMINAL 2	BLACK
LED+	RED
LED-	GREEN