

# MPS19 Series

19mm Short Metal Pushbutton Switches



## SPECIFICATIONS

**RATING** : 2A/36VDC

**ELECTRICAL LIFE**: 200,000 make-and-break cycles at full load.

**MECHANICAL LIFE**: 1,000,000. Cycles

**DIELECTRIC STRENGTH**: 2,000V RMS@sea level

**CONTACT RESISTANCE**: 50mΩ MAX.@1A 12VDC(initial value)

**OPERATING TEMPERATURE**: -20°C to 70°C

**TRAVEL**: ABOUT 1.8±0.2mm

**OPERATION PRESSURE**: 4.5±1.5N

**INGRESS PROTECTION**: IP67,IK10(Stainless)

**TORQUE**: 1~3Nm

Current limiting resistor is required to limit led forward current to 20mA

## MATERIALS

**BUSHING** : Stainless Steel

**BASE** : PA66,White UL-94V0

**ACTUATOR** : PC,Translucent UL-94V2

Stainless Steel

**INNER ASSEMBLY** : PC,Transparent UL-94V2

**SPRING** : Spring steel

**SEALING** : Silicone,Translucent

**O-Ring** : Silicone,Black

**TERMINAL** : Brass ,Gold flash plated

**CONTACT** : Brass,Sliver alloy

**HEX NUT** : Brass,Nickel plated

## HOW TO ORDER

IP 67  
ACCORDING TO  
EN 60529:1991+A1:2001  
IEC 60529:2001



MODEL NO. BODY MATERIAL BODY TYPE BUTTON TYPE LIGHT TYPE LED COLOR TERMINAL SHAPE TERMINAL PLATING LED VOLTAGE WIRE

**MPS19** — ☐ — ☐ — ☐ — ☐ — ☐ — ☐ — ☐ — ☐ — ☐

Body Material  
**A0** Stainless (Natural)

Body type  
**1** Double flat  
**2** Non-flat  
**3** D Shape

Button type  
**F** Flat

Light type  
**N** Without LED  
**E** Ring  
**P** Power+Ring

LED Color

ITEM NO	COLOR
0	Without LED
1	White
3	Red
5	Yellow
6	Green
7	Blue

DUAL COLOR LED

A	Red&Green
B	Red&Blue

Terminal shape  
**J** Solder terminal

Terminal plating  
**R** Gold flash

Accessories

Resistance (About LED Voltage)	
0V	Without Resistance
3V	LED input 3 VDC,47Ω * Red/Yellow/Orange LED type only
6V	LED input 6 VD,180ΩC
12V	LED input 12 VDC,470Ω
24V	LED input 24 VDC,1000Ω

※ ohms value of resistance tolerance: ±5%

Wire

☐ Without wire  
**L0001** Wire length 500mm

EXAMPLE:

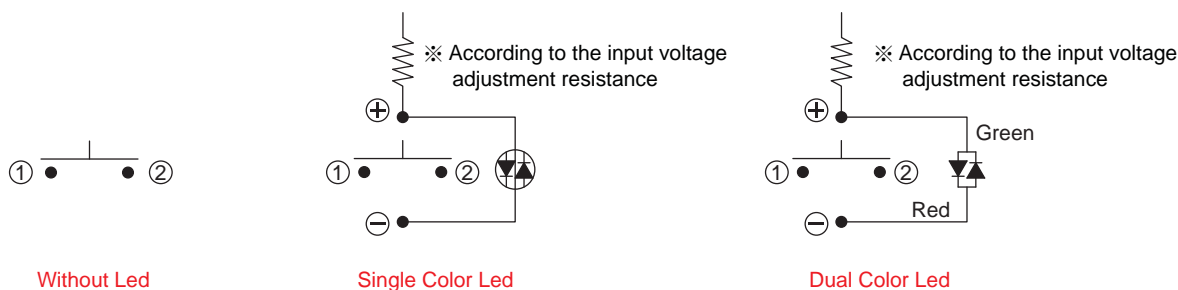
MPS19-A01FN-0-JR-0V (Without LED)

MPS19-A01FE-☐-JR-☐V

LED color LED voltage

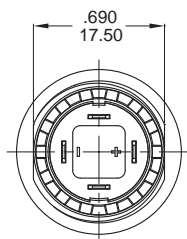
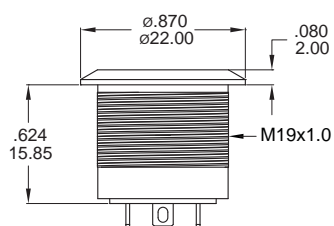
MPS19-A01FE-3-JR-12V-L0001(Wire)

## CIRCUIT

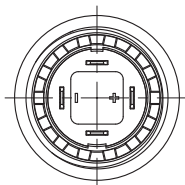
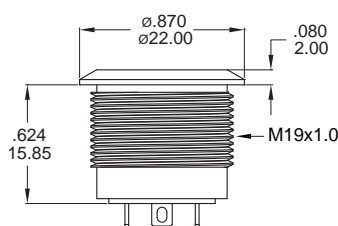


## BODY TYPE

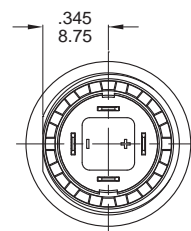
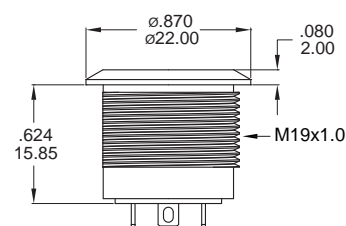
Double flat



Non-flat

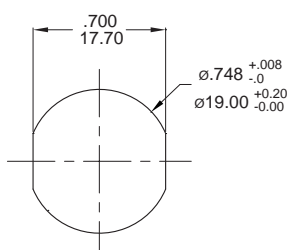


D Shape

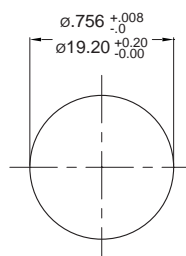


### PANEL CUTOUT

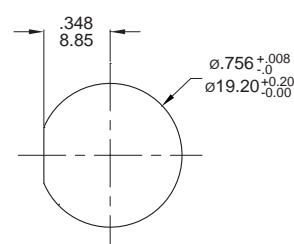
Thickness: 6.0mm(Max.)



Double flat



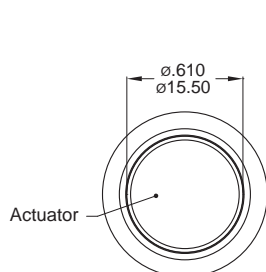
Non-flat



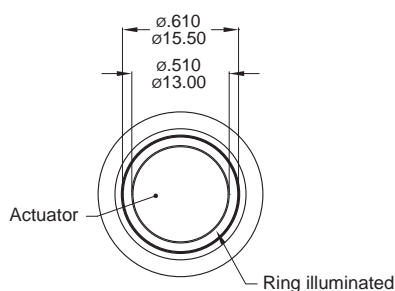
D Shape

## LIGHT TYPE

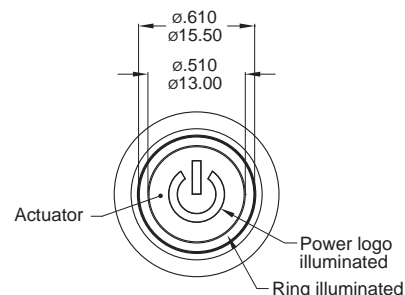
N Without LED



E Ring



P Power+Ring

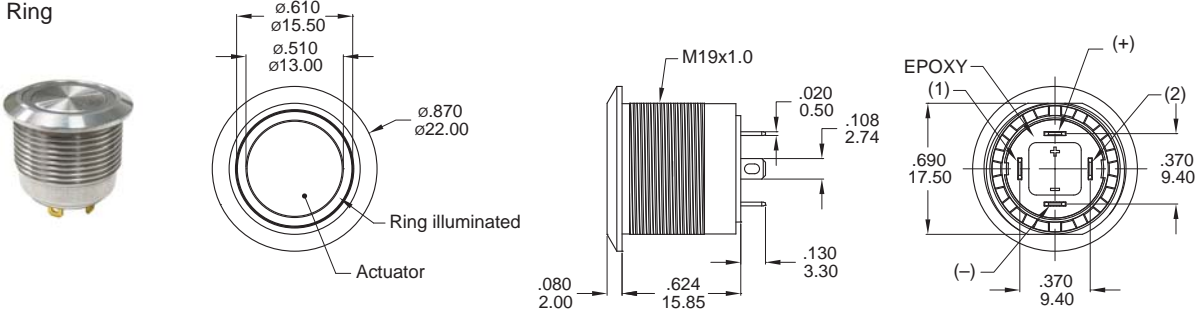


# MPS19 Series

19mm Short Metal Pushbutton Switches

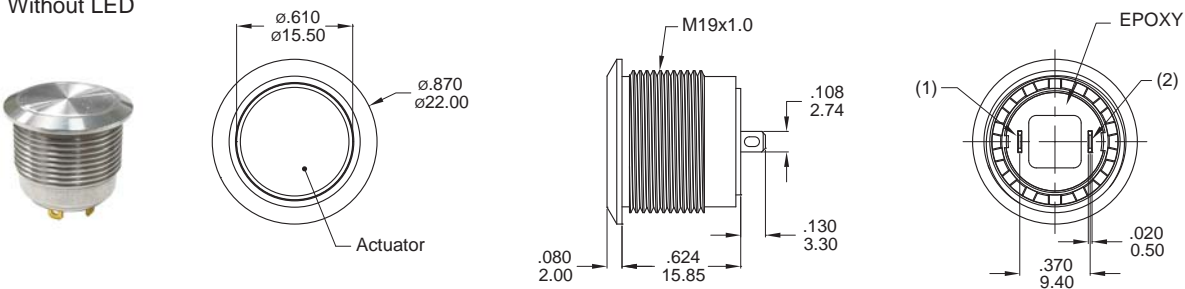
## LIGHT TYPE

E Ring



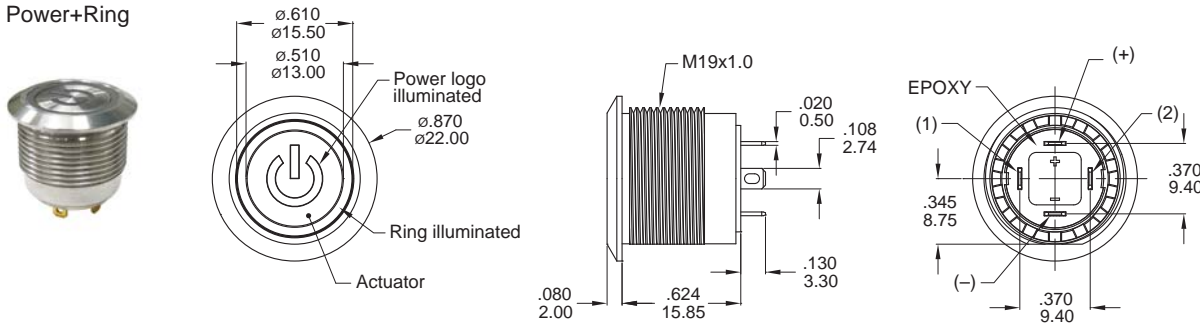
Part No. Shown : MPS19-A01FE-□-JR-□V

N Without LED



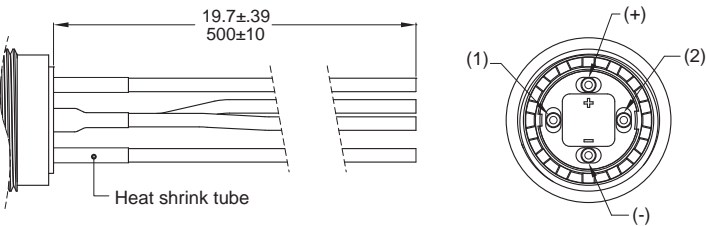
Part No. Shown : MPS19-A02FN-0-JR-0V

P Power+Ring



Part No. Shown : MPS19-A03FP-□-JR-□V

L0001 ※ Wire=Multi-wire lead AWG20,section 0.6mm²,UL approved

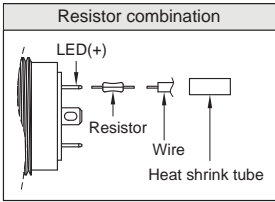


### Non-LED

Description	Wire color
Terminal 1	Black
Terminal 2	Black

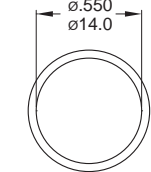
### With LED

Description	Wire color
Terminal 1	Black
Terminal 2	Black
LED+	Red
LED-	Green

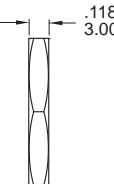
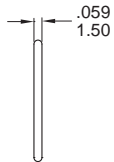
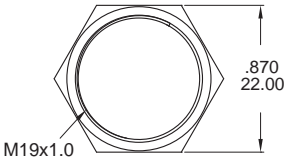


### ADDITIONAL

O-RING  
No.:CP-PY02



M19 NUT  
No.:NU-MPB01



### O-RING INSTALLATION

