

MW22 Series

22mm High Current Metal Pushbutton Switches



SPECIFICATIONS

RATING : 16A, 26A 250/125VAC.

CONTACT RESISTANCE : 50 mΩ max. @ 1A 12VDC (initial value)

INSULATION RESISTANCE : 100 MΩ min. at 500VDC

DIELECTRIC STRENGTH : 1,500V RMS @ sea level

OPERATION TEMPERATURE : -25°C to 85°C

MECHANICAL LIFE : Momentary 1,000,000 cycles
Latching 500,000 cycles

ELECTRICAL LIFE : 16A /125&250VAC 50,000 CYCLES
26A /125&250VAC 10,000 CYCLES

OPERATION PRESSURE : 3.5±1.5N

TRAVEL : About 3.2mm

INGRESS PROTECTION : IP67, IK08(Stainless)

TORQUE: 1~3Nm.

MATERIALS

BUSHING : Stainless Steel / Aluminum alloy

BASE : PBT(UL 94-V0) , PC(UL 94-V2)

ACTUATOR : PC ; Stainless Steel / Aluminum alloy

INNER ASSEMBLY : POM / PA66.

SPRING : Steel.

SEALING : Silicone.

O-Ring : Silicone.

TERMINAL: Brass ,Silver plated.

HEX NUT : Nickel plated brass.



IP 67
ACCORDING TO
EN 60529:1991+A1:2001
IEC 60529:2001



HOW TO ORDER

MODEL NO. BODY TYPE BUTTON TYPE OPERATING TYPE LIGHT TYPE LED COLOR LED VOLTAGE MICRO SWITCH TYPE RATING CONNECT FORMS TERMINAL TYPE

MW22 — [] — [] — [] — [] — [] — [] — [] — [] — [] — []

Body type
A0 Stainless (Natural)
C3 Al alloy (Black Anodized)

Operating type
0 Momentary
1 Lock

Light type
0 Without LED
E Ring Moveable
L Ring+Power logo

Button type
F Flat

LED Color

ITEM NO	COLOR
0	Without LED
1	White
3	Red
5	Yellow
6	Green
7	Blue
DUAL COLOR LED	
A	Red&Green
B	Red&Blue

LED Voltage (20mA)

ITEM NO	VOLTAGE
0	Without resistor
3	3V
6	6V
12	12V
24	24V
36	36V
110	110V
220	220V

Micro switch type
A Standard (D-Logo)

Rating
1 16A(Only for terminal B type)
3 26A(Only for terminal A type)

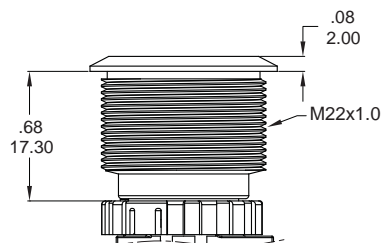
Connect forms
Z SPDT
T SPST-NO
D SPST-NC

Terminal type
A #250 Quick-connect terminal (t=0.8mm)
B #187 Quick-connect terminal(t=0.8mm)

EXAMPLE:
MW22-A0R0000-A3ZA (Without LED)
MW22-A0F0E [] [] -A3ZA
LED color — LED voltage

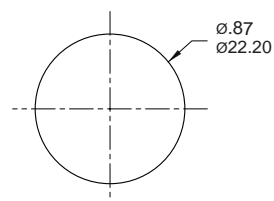
BODY TYPE

A0/C3



PANEL MOUNTING

Max. Panel thickness: 10.0mm[.39]

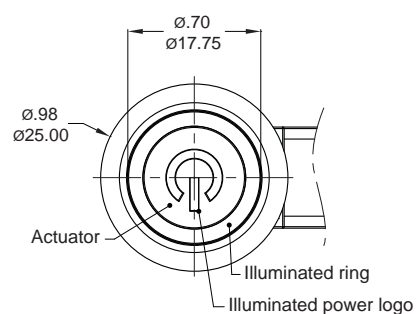
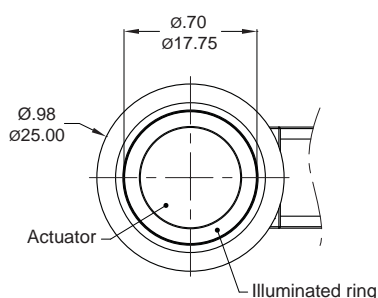
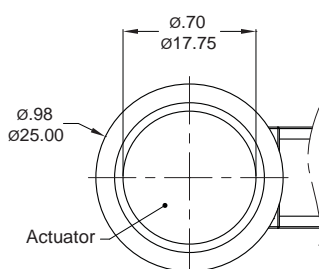


LIGHT TYPE

0 Without LED

E Ring Moveable

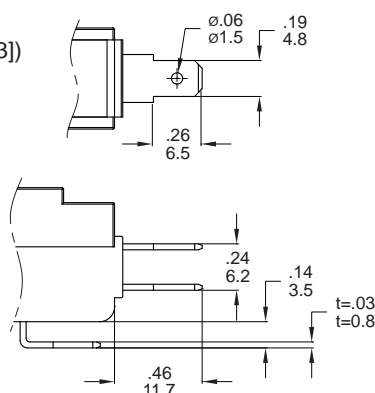
L Ring+Power logo



TERMINAL TYPE

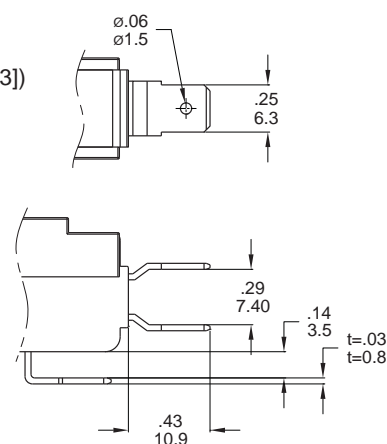
#187 Only 16A

Quick-connect terminal(t=0.8mm[.03])

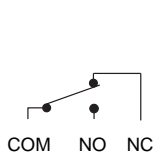


#250 Only 26A

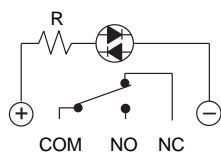
Quick-connect terminal(t=0.8mm[.03])



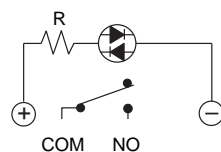
CIRCUIT



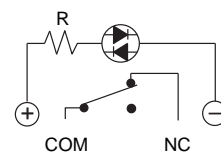
Non-LED



SPDT



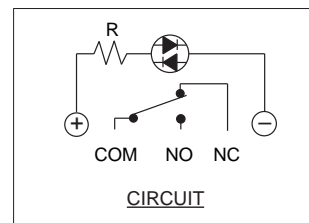
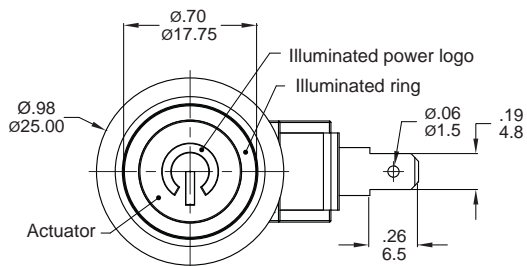
SPST-NO



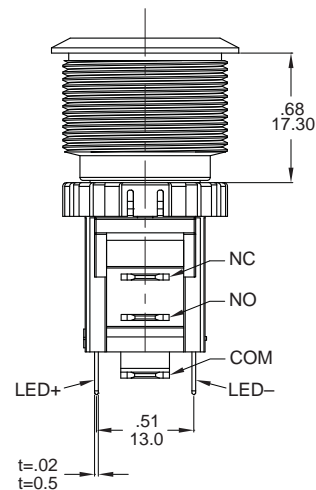
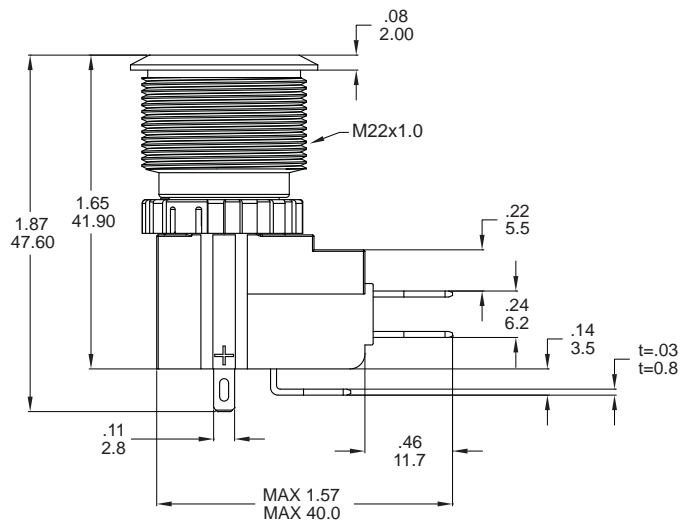
SPST-NC

22mm High Current Metal Pushbutton Switches

L Ring+Power logo

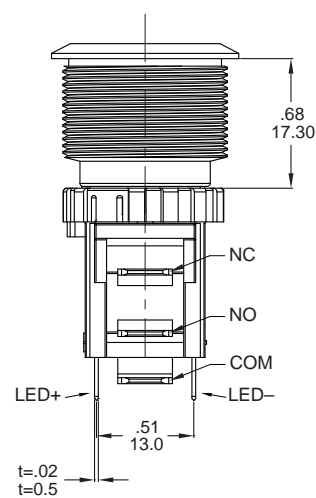
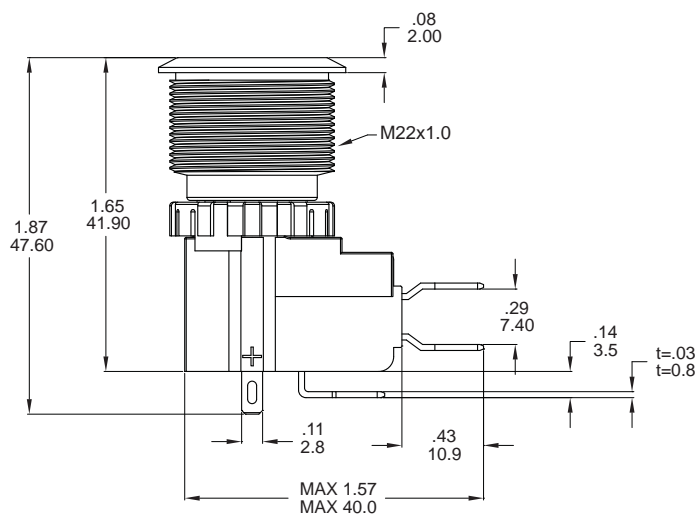
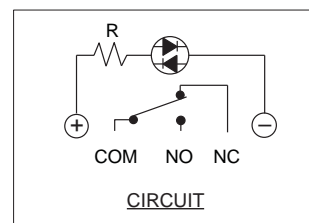
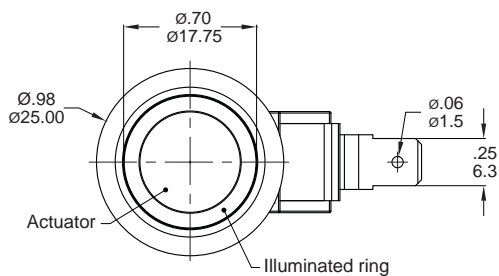


MW22 Pushbutton Switches



Part No. Shown : MW22-A0F1L7□-A1ZB

E Ring Moveable



Part No. Shown : MW22-A0F0E6□-A3ZA