



SPECIFICATIONS

MECHANICAL LIFE: 100,000 make-and-break cycles.

ELECTRICAL LIFE: 50,000 cycles.

CONTACT RESISTANCE: 200 mΩ max. initial @ 2-4VDC 100mA

CONTACT RATING: 0.4Volt-Amps(VA) max. @20V max(AC or DC)

OPERATING POSITION: 0.65±0.2mm.

OPERATING FORCE: 630±130gf.

INSULATION RESISTANCE: 100 MΩ min.

DIELECTRIC STRENGTH: 1,000 V RMS@sea level.

OPERATING TEMPERATURE: -30°C to 85°C.

PANEL THICKNESS: 1.5 mm (.059) min. - 5 mm (.197) max.

TORQUE: 2.2 Nm max. applied to nut.

MATERIALS

HOUSING & BUSHING: Nylon 6/6.

BUTTON: Stainless steel.

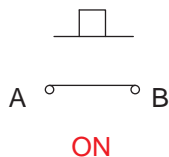
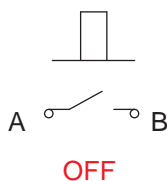
ACTUATOR: Silicon.

CONTACT / TERMINALS: Copper alloy, with gold plated.

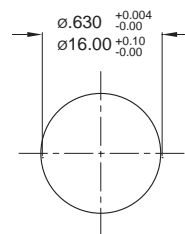


SCHEMATIC / PANEL MOUNTING

FUNCTION: Momentary action

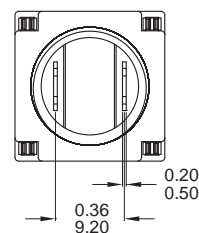
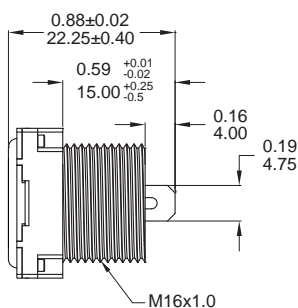
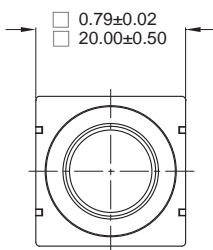


PANEL CUTOUT



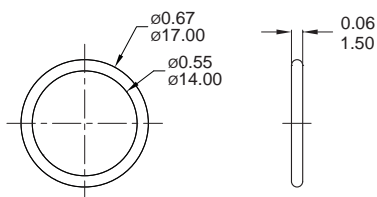
DIMENSION

M1



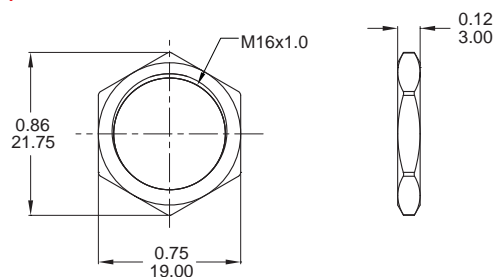
Part No. Shown : PY063S2011X0M1R01

O-RING



FCP-PY02

NUT



MNU-PY01