

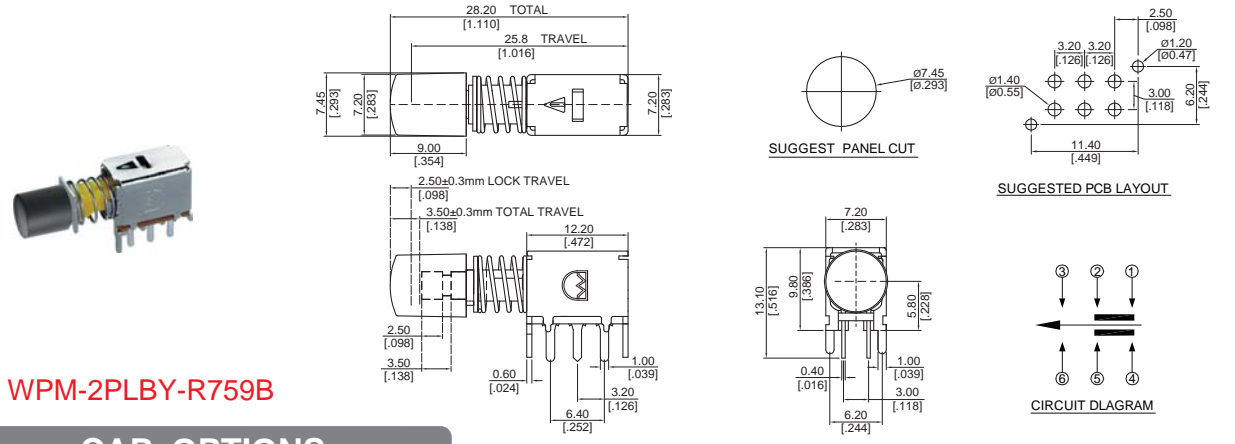
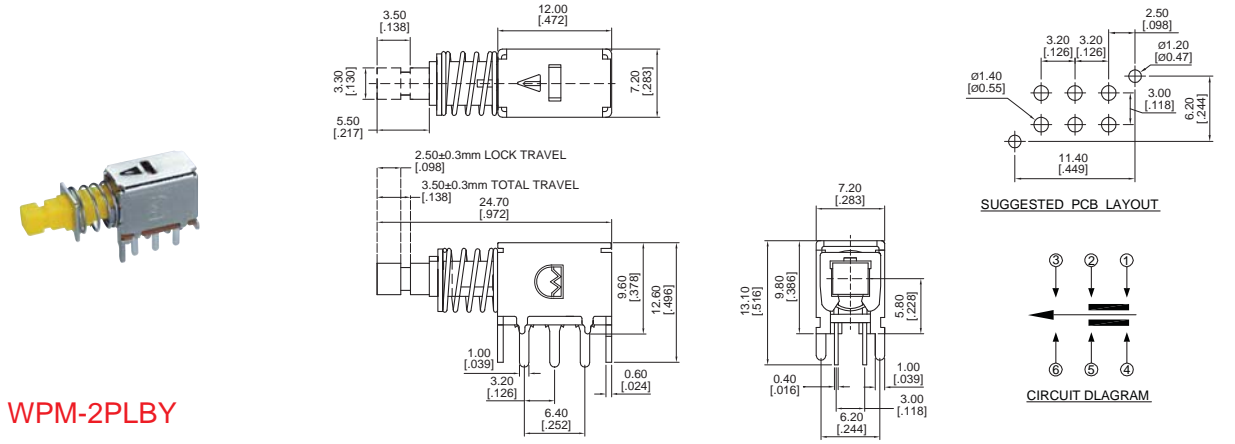
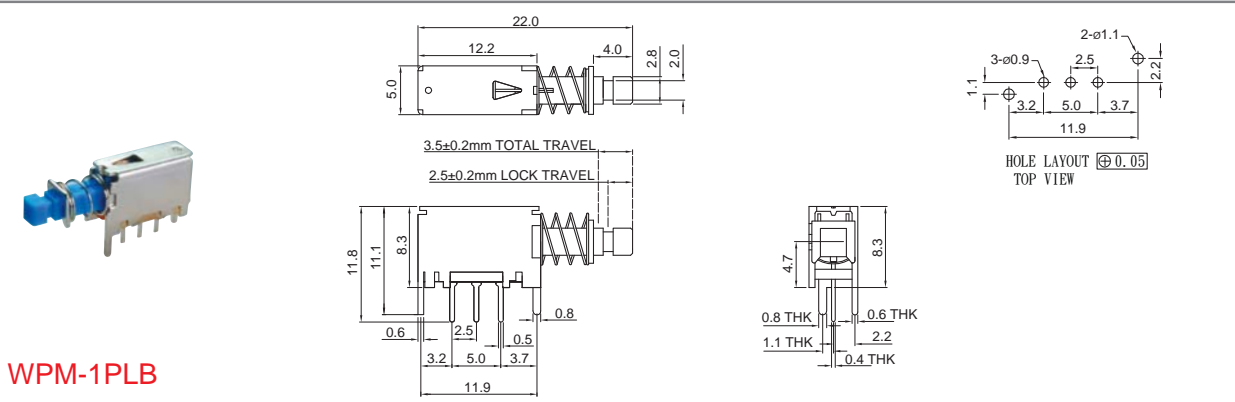
WPM Series

Push Switches

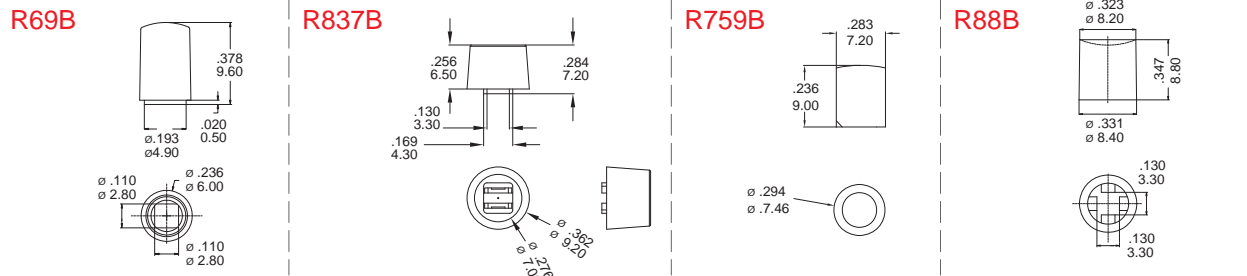
SPECIFICATIONS

RATING:0.3A 50V DC
Contact Resistance:30mΩ
Insulation Resistance:100V DC 1Min 100mΩ
Withstand Voltage:AC 500V 1Min 0.5mA 1 Min

Operating Force:160gf±100gf
Life Test:10,000 Cycle 15~18 Cycle/Min



CAP OPTIONS



SPECIFICATIONS

LIFE TEST:WITHOUT LOADING 10000cycles at a speed
of 15-18cycles

CONTACT RESISTANCE:30mΩ max

INSULATION RESISTANCE:100MΩ min

DIELETRIC STRENGTH:500V AC FOR 1 MIN

OPERATING TEMPERATURE:-16℃~+60℃

RATING:DC 1.0A 12V

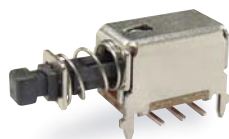
FUNCTION:2P2T

TIMING:NON-SHORTING

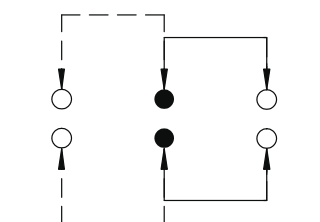
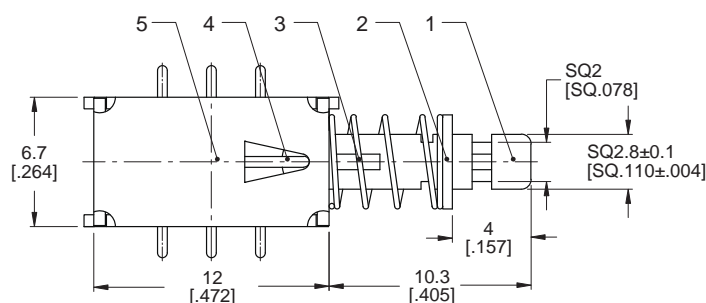
OPERATING FORCE:250gf±100gf

LOCK TRAVEL:2.5±0.2

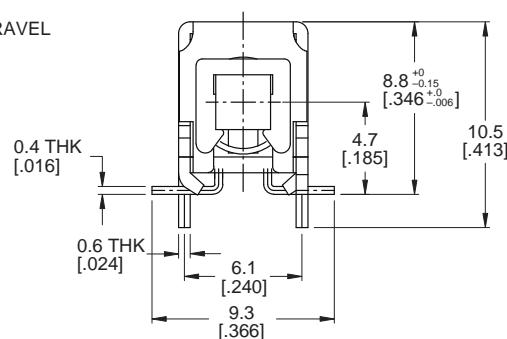
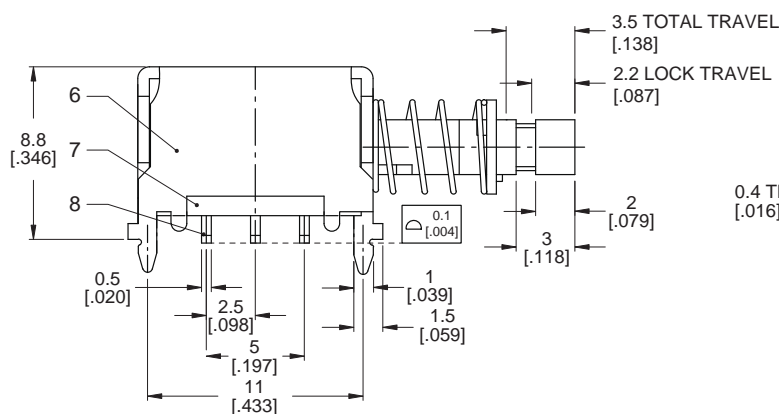
TOTAL TRAVEL:3.5±0.25



DIMENSION

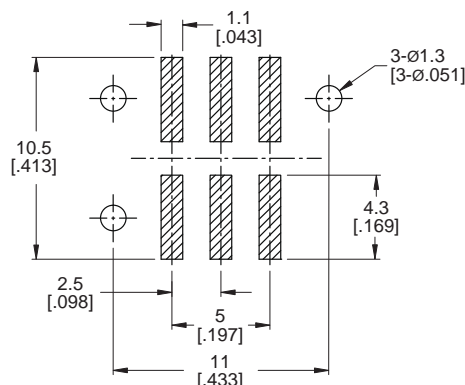


SCHEMATIC (NON-SHORTING)



Part No. Shown : PS22E08000

9	CONTACT CLIP	PBS C5210R-EH	2	Ag PLATED
8	TERMINAL	BRASS STRIP	6	Ag PLATED
7	BASE	PHENOLIC RESIN	1	
6	FRAME	STEEL STRIP	1	Ni PLATED
5	SPRING PLATE	PBS STRIP	1	NATURAL
4	CAM STICK	BRASS WIRE	1	Ni PLATED
3	SPRING	STEEL WIRE	1	Ni PLATED
2	BLOCK	STEEL STRIP	1	Ni PLATED
1	KNOB	LCP	1	BLACK
NO.	PARTS	MATERIALS	Q'TY	FINISHING



P.C.B LAYOUT
TOP VIEW