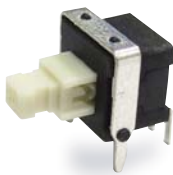


# PS508 Series

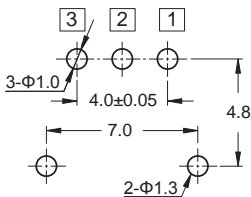
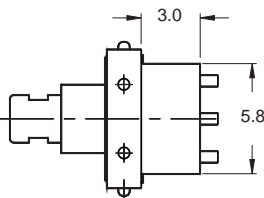
Pushbutton Switches



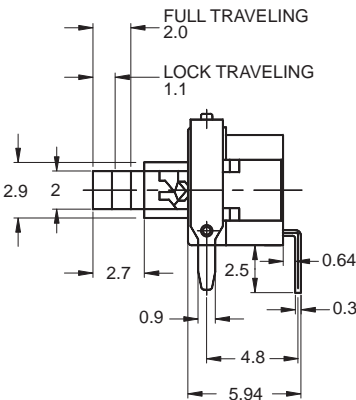
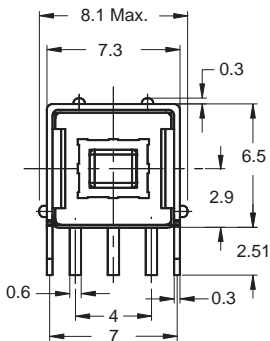
## SPECIFICATIONS

- OPERATION: NON-LOCK
- RATING: 12 V DC,50mA
- CONTACT RESISTANCE: 100 mΩ MAX.
- INSULATION RESISTANCE: 500 V DC,100MΩ MIN.
- OPERATING FORCE: 250 ± 50gf
- OPERATION TEMPERATURE RANGE: -20°C~+70°C
- OPERATION LIFE: 50,000 CYCLES

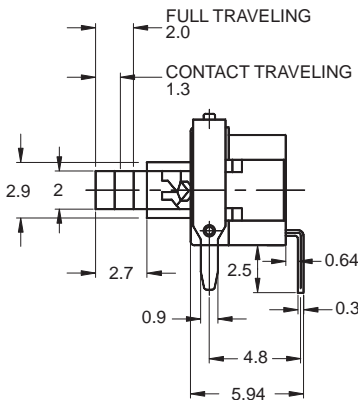
## SCHEMATIC



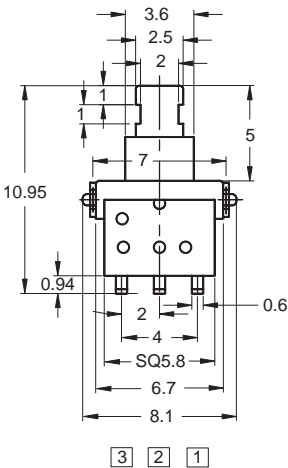
P.C.B LAYOUT



LOCK  
Part No. shown: PS058AHP-LR-R



NO LOCK  
Part No. shown: PS058AHP-NR-R



7	TERMINAL	BRASS	2	SILVER PLATING
6	COVER BUSHING	SUS	1	
5	SPRING	SUS	1	
4	CONTACT	COPPER ALLOY	1	SILVER PLATING
3	BASE	NYLON	1	
2	COVER	NYLON	1	
1	KNOB	NYLON	1	
NO.	PARTS	MATERIALS	Q'TY	FINISH